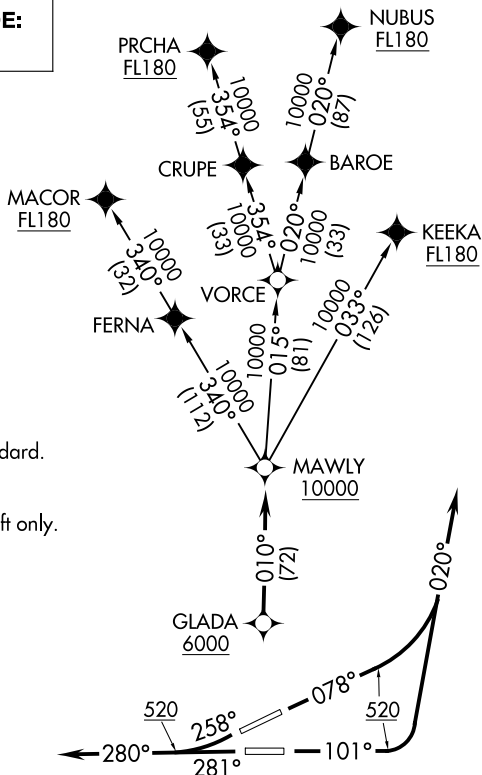


GLADA THREE DEPARTURE (RNAV) AL-784 (FAA)

SAN JUAN, PUERTO RICO

D-ATIS 125.8
CLNC DEL
126.4 284.6
CPDLC
SAN JUAN TOWER
132.05 257.8
GND CON
121.9 348.6
SAN JUAN DEP CON
119.4 269.2 (West & SW)
120.9 290.2 (North & East)

TOP ALTITUDE:
5000



TAKE-OFF MINIMUMS

Rwys 8, 10, 26, 28: Standard.

NOTE: GPS required.

NOTE: For Turbojet aircraft only.

NOTE: RNAV 1.

NOTE: RADAR required.

NOTE: Chart not to scale.

DEPARTURE ROUTE DESCRIPTION

TAKEOFF RUNWAY 8: Climb heading 078° to 520, then climbing left turn heading 020° or as assigned by ATC, expect vectors to GLADA, then via 010° track to MAWLY. Thence. . .

TAKEOFF RUNWAY 10: Climb heading 101° to 520, then climbing left turn heading 020° or as assigned by ATC, expect vectors to GLADA, then via 010° track to MAWLY. Thence. . .

TAKEOFF RUNWAY 26: Climb heading 258° to 520, continue climb heading 280° or as assigned by ATC, expect vectors to GLADA, then via 010° track to MAWLY. Thence. . .

TAKEOFF RUNWAY 28: Climb heading 281° to 520, continue climb heading 280° or as assigned by ATC, expect vectors to GLADA, then via 010° track to MAWLY. Thence. . .

...via assigned transition. Maintain 5000 unless assigned lower altitude. Expect clearance to FL200, or requested altitude if lower, ten minutes after departure.

KEEKA TRANSITION (GLADA3.KEEKA)

MACOR TRANSITION (GLADA3.MACOR)

NUBUS TRANSITION (GLADA3.NUBUS)

PRCHA TRANSITION (GLADA3.PRCHA)