

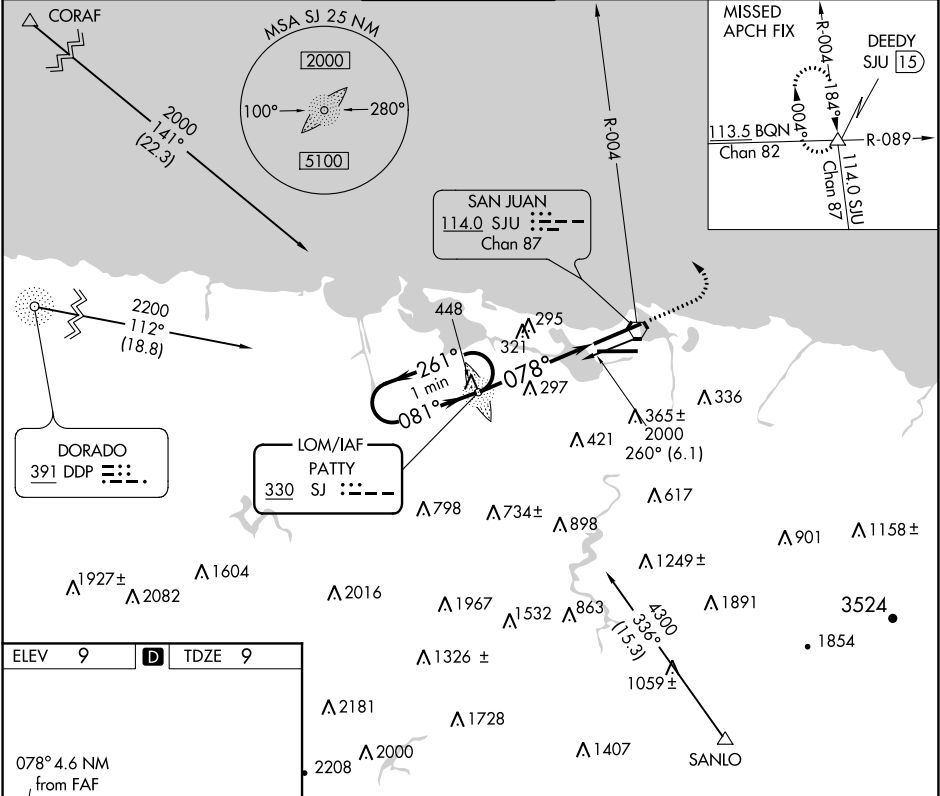
LOM SJ	APP CRS	Rwy Idg	9384
330	078°	TDZE	9
		Apt Elev	9

NDB RWY 8  
LUIS MUNOZ MARIN INTL (SJU)(TJSJ)

MALS R

MISSED APPROACH: Climb to 2000, then climbing left turn to 3000 via SJU VORTAC R-004 to DEEDY Int/SJU 15 DME and hold.

D-ATIS	SAN JUAN APP CON	SAN JUAN TOWER	GND CON	CLNC DEL	CPDLC
125.8	119.4 269.2 120.9 290.2 (WEST & SW) (NORTH & EAST)	132.05 257.8	121.9 348.6	126.4 284.6	



ELEV 9 TDZE 9

078° 4.6 NM from FAF

10400 X 193

TWR 250

8016 X 150

REIL Rwy 26

HIRL Rwys 8-26 and 10-28

FAF to MAP 4.6 NM

Knots	60	90	120	150	180
Min:Sec	4:36	3:04	2:18	1:50	1:32

One Minute Holding Pattern

PATTY LOM

2000

261°

081°

1700

078°

3.36°

TCH 46

4.6 NM

2000

3000

DEEDY

SJU R-004

VGSI and descent angles not coincident (VGSI Angle 3.00/TCH 70).

CATEGORY	A	B	C	D
S-8	600-¾	591 (600-¾)	600-1 591 (600-1)	600-1½ 591 (600-1½)
CIRCLING	600-1	591 (600-1)	600-1½ 591 (600-1½)	600-2 591 (600-2)

SE-3, 03 DEC 2020 to 31 DEC 2020

SE-3, 03 DEC 2020 to 31 DEC 2020