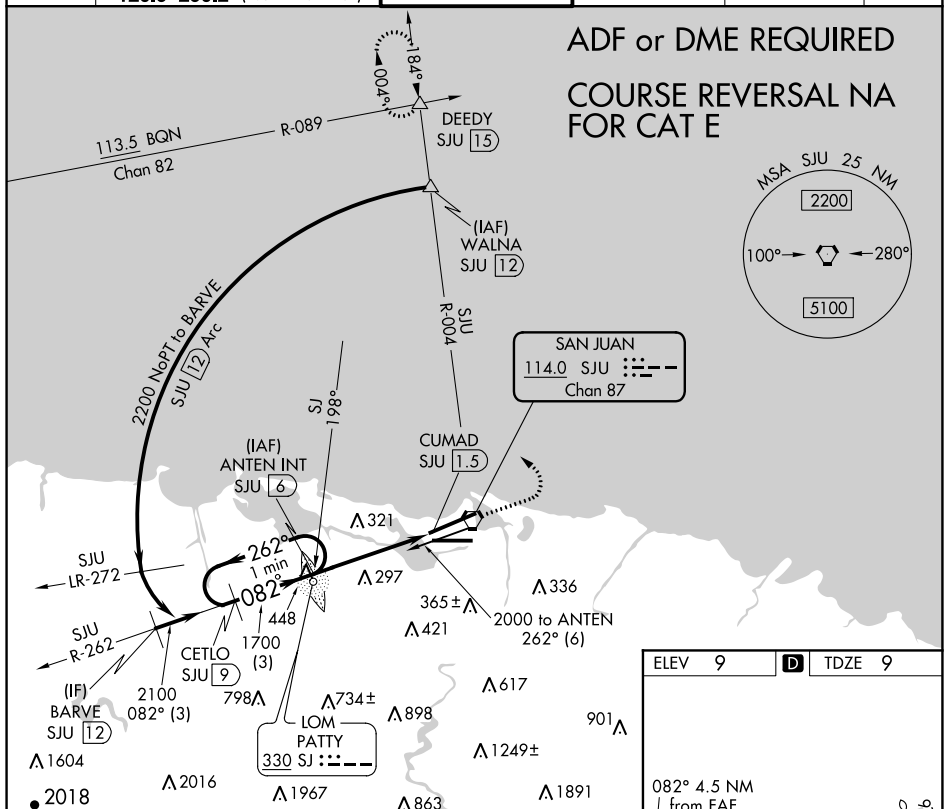


VOR or TACAN RWY 8
LUIS MUNOZ MARIN INTL (SJU)(TJSJ)

MISSED APPROACH: Climb to 2000 then climbing left turn to 3000 via heading 320° and SJU VORTAC R-004 outbound to DEEDY INT/SJU 15 DME and hold.

D-ATIS 125.8	SAN JUAN APP CON 119.4 269.2 (WEST & SW) 120.9 290.2 (NORTH & EAST)	SAN JUAN TOWER 132.05 257.8	GND CON 121.9 348.6	CLNC DEL 126.4 284.6	CPDLC
-----------------	---	--------------------------------	------------------------	-------------------------	-------



One Minute Holding Pattern

ANTEN INT SJU (6)

2000 ← 262°
082° →

VGSI and descent angles not coincident (VGSI Angle 3.00/TCH 70).

1700

3.45° TCH 46

082°

3 NM

1.5

SJU (3)

CUMAD SJU (1.5)

CATEGORY	A	B	C	D	E
S-8	560-1½	551 (600-½)	560-1 551 (600-1)	560-1¼ 551 (600-1¼)	560-1½ 551 (600-1½)
CIRCLING	600-1	591 (600-1)	600-1½ 591 (600-1½)	600-2 591 (600-2)	900-3 891 (900-3)

