

NDB LCQ  
**204**

APP CRS  
287°

Rwy Idg	<b>8003</b>
TDZE	<b>196</b>
Apt Elev	<b>201</b>

NDB RWY 28  
LAKE CITY GATEWAY (LCQ)

**T** Circling to Rwy 10 NA at night. When local altimeter setting not received, use Gainesville altimeter setting and increase all MDA 100 feet, and increase S-28 Cats C/D and Circling Cat C visibility  $\frac{1}{4}$  mile.

**A** NA Helicopter visibility reduction below  $\frac{3}{4}$  SM not authorized.

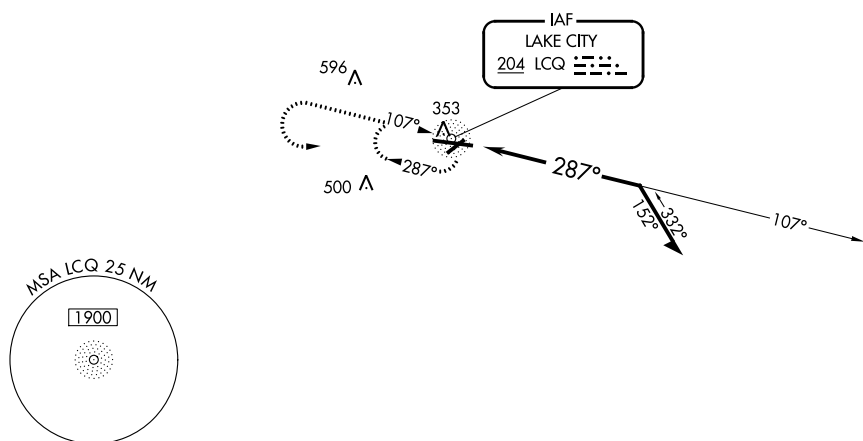
**MISSED APPROACH:** Climb to 1000 then climbing left turn to 2000 direct LCQ NDB LOM and hold.

AWOS-3  
120.675

JACKSONVILLE CENTER  
125.375 254.325

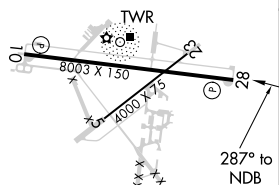
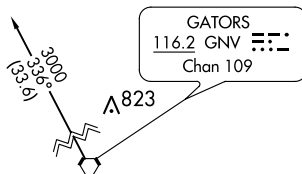
LAKE CITY TOWER ★  
119.2 (CTAF) 314.6

GND CON  
**121.9**

UNICOM  
122.95

ELEV 201

TDZE 196



1000

2000



LCQ

Remain  
within 10 NM

REIL Rwys 10 and 28 **L**  
MIRL Rwys 5-23 and 10-28 **L**

LAKE CITY, FLORIDA  
Amdt 2A 02MAY13

30°11'N-82°35'W

LAKE CITY GATEWAY (LCQ)  
NDB RWY 28

CATEGORY	A	B	C	D
S-28	760-1 564 (600-1)		760-1 <sup>5</sup> / <sub>8</sub> 564 (600-1 <sup>5</sup> / <sub>8</sub> )	
CIRCLING	760-1 559 (600-1)		760-1 <sup>1</sup> / <sub>2</sub> 559 (600-1 <sup>1</sup> / <sub>2</sub> )	760-2 559 (600-2)