

WAAS CH 78409 W09A	APP CRS 095°	Rwy Idg 10002 TDZE 55 Apt Elev 55
--	------------------------	--

RNAV (GPS) RWY 9L
ORLANDO SANFORD INTL (SFB)

RNP APCH.

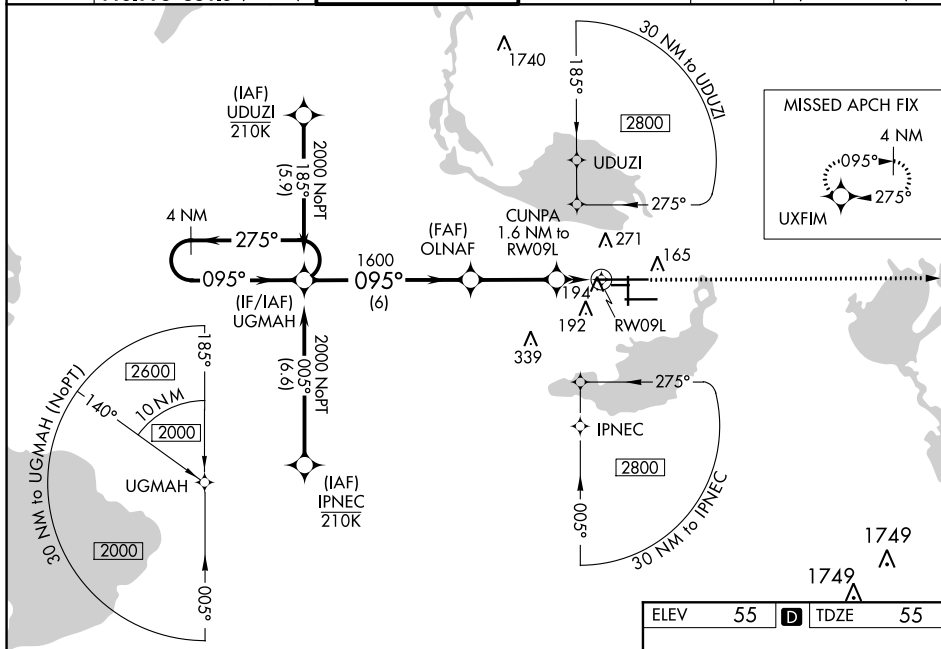
V For uncompensated Baro-VNAV systems, LNAV/VNAV NA below 0°C
A or above 54°C. Baro-VNAV and VDP NA when using Executive
altimeter setting. When local altimeter setting not received, use Executive
altimeter setting and increase LPV DA to 282, LNAV/VNAV DA to 501
and all MDA 60 feet; increase LNAV/VNAV all Cats visibilities 1/2 SM and
LNAV Cat C/D visibility 1/4 SM. Night landing: Rwy 27C NA.

MALSR

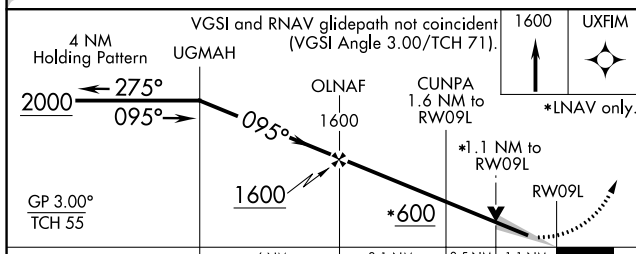


MISSED APPROACH: Climb to 1 600 direct UXFIM and hold.

ATIS 125.975	ORLANDO APP CON 135.3 351.9 (NORTH) 119.775 351.9 (SOUTH)	SANFORD TOWER ★ 120.3 (CTAF) 0 254.35	GND CON 121.35 254.35	CLNC DEL 123.975	CLNC DEL 121.35 (when tw closed)
-----------------	---	--	--------------------------	---------------------	--



ELEV	55	D	TDZE	55
------	----	----------	------	----



CATEGORY		A		B		C		D	
LPV	DA	255-½		200 (200-½)					
LNAV/ VNAV	DA	355-½		300 (300-½)					
LNAV	MDA	460-½ 405 (500-½)		460-¾ 405 (500-¾)					
C CIRCLING		580-1 525 (600-1)		600-1½ 545 (600-1½)		640-2 585 (600-2)			

