

WAAS  
CH **48810**  
**W09B**

APP CRS  
**095°**

Rwy ldg **5000**  
TDZE **39**  
Apt Elev **55**

RNAV (GPS) RWY 9R

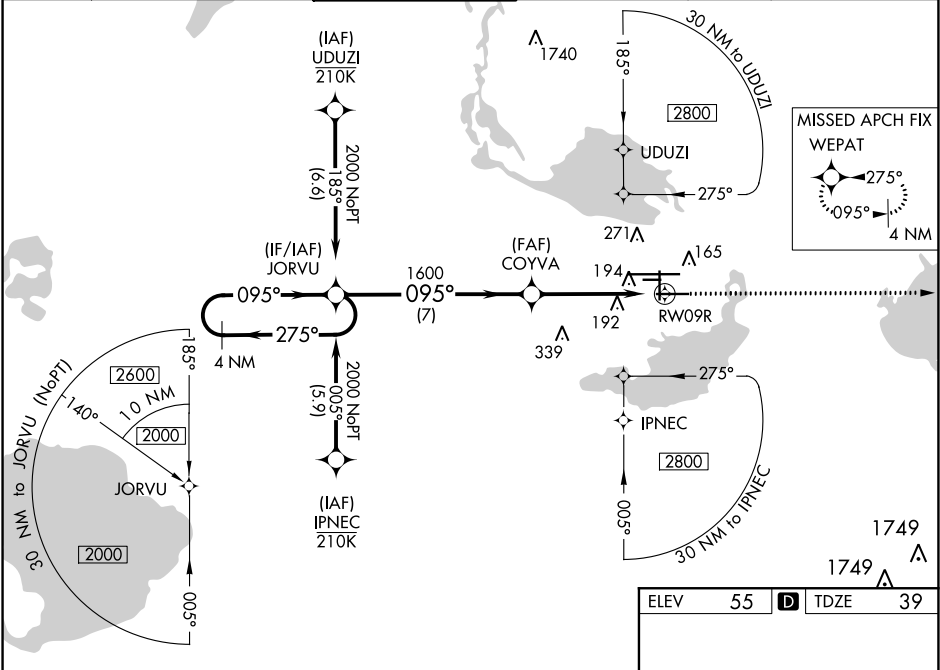
ORLANDO SANFORD INTL (SF'B)

▼ For uncompensated Baro-VNAV systems, LNAV/VNAV NA below 0° C or above 54° C. Baro-VNAV and VDP NA when using Executive altimeter setting. When local altimeter setting not received, use Executive altimeter setting and increase LPV DA to 282, LNAV/VNAV DA to 501 and all MDA 60 feet; increase LNAV/VNAV all Cts visibilities ½ SM and LNAV Cat C/D visibility ¼ SM. Night landing: Rwy 27C NA.

MALSR

MISSED APPROACH: Climb to 1600 direct WEPAT and hold.

ATIS <b>125.975</b>	ORLANDO APP CON <b>135.3 351.9 (NORTH)</b> <b>119.775 351.9 (SOUTH)</b>	SANFORD TOWER★ <b>120.3(CTAF) 0 254.35</b>	GND CON <b>121.35 254.35</b>	CLNC DEL <b>123.975</b>	CLNC DEL <b>121.35</b> (when twr closed)
------------------------	---	---	---------------------------------	----------------------------	--



4 NM Holding Pattern

JORVU

COYVA

1600

WEPAT

GP 3.00° TCH 45

2000

275°

095°

095°

1600

1.2 NM to RW09R

\*LNAV only.

7 NM

3.6 NM

1.2

CATEGORY	A	B	C	D
LPV DA	239-½ 200 (200-½)			
LNAV/VNAV DA	458-1 419 (500-1)			
LNAV MDA	460-½ 421 (500-½)		460-¾ 421 (500-¾)	
CIRCLING	580-1 525 (600-1)		600-1½ 640-2 545 (600-1½) 585 (600-2)	

MIRL Rwy 9C-27C and 18-36

HIRL Rwy 9L-27R and 9R-27L

REIL Rws 9C, 18, 27L and 36