

WAAS CH <b>77805</b> <b>W23A</b>	APP CRS <b>229°</b>	Rwy Idg <b>5005</b> TDZE <b>141</b> Apt Elev <b>142</b>
--	------------------------	---

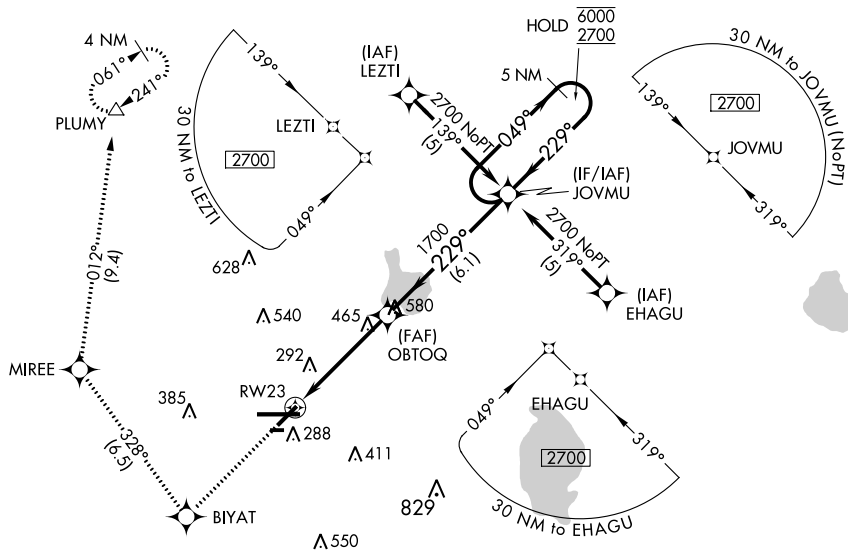
RNAV (GPS) RWY 23  
LAKELAND LINDER INTL (LAL)

RNP APCH.

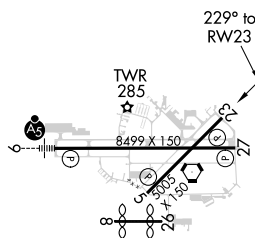
**▼** For uncompensated Baro-VNAV systems, LNAV/VNAV NA below -15°C or above 54°C.  
**▲** When local altimeter setting not received, use Plant City altimeter setting and increase all DA/MDA 20 feet and increase LNAV Cat C/D and Circling Cat C visibility ½ SM.  
 Baro-VNAV and VDP NA when using Plant City altimeter setting. Rwy 23 helicopter visibility reduction below ¾ SM NA. Circling NA to Rwy's 8 and 26.

**MISSED APPROACH:** Climb to 2000 direct BIYAT and right turn on track 328° to MIREE then on track 012° to PLUMY and hold.

ATIS 118.025	TAMPA APP CON 120.65 290.3	LAKELAND TOWER 124.5 (CTAF) 0 236.775	GND CON 121.4
-----------------	-------------------------------	--	------------------



ELEV 142	<b>D</b>	TDZE 141
----------	----------	----------



2000 ↑	BIYAT ✧	tr 328°	MIREE ✧	tr 012°	PLUMY △	JOVMU	5 NM Holding Pattern
*LNAV only.							
						GP 3.00° TCH 50	
CATEGORY	A		B		C		D
LPV DA	426-1 285 (300-1)						
LNAV/ VNAV	480-1¼ 339 (400-1¼)						
LNAV MDA	720-1 579 (600-1)				720-1½ 579 (600-1½)		720-1¾ 579 (600-1¾)
CIRCLING	720-1 578 (600-1)				720-1½ 578 (600-1½)		720-2 578 (600-2)