

VORTAC LAL
116.0
Chan 107

APP CRS
096°

Rwy Idg 8414
TDZE 132
Apt Elev 142

VOR RWY 9
LAKELAND LINDER INTL (LAL)

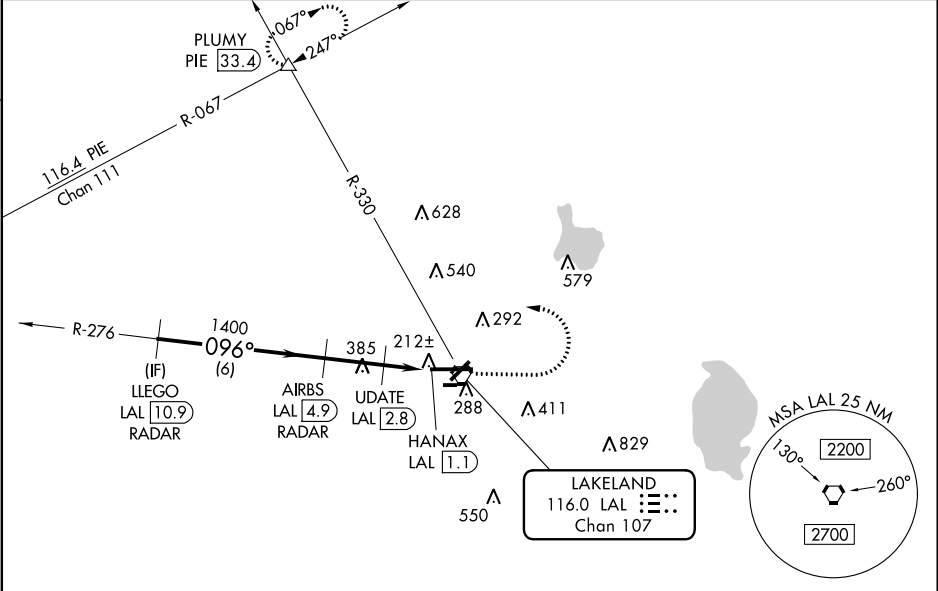
RADAR required for procedure entry. DME or RADAR required.

When local altimeter setting not received, use Plant City altimeter setting and increase all MDA 20 feet; increase Circling Cat C visibility 1/8 SM. VDP NA when using Plant City altimeter setting. For inop ALS, increase S-9 Cat C/D visibility to 1 3/8 SM; increase UDATE Fix Minimums S-9 Cat C/D visibility to 1 3/8 SM. For inop ALS when using Plant City altimeter setting, increase UDATE Fix Minimums S-9 Cat C/D visibility to 1 1/8 SM. Circling NA to Rwy 8 and 26.

MALSRLALSR

MISSED APPROACH: Climb to 1000 then climbing left turn to 2000 on heading 294° and on LAL VORTAC R-330 to PLUMY INT/PIE 33.4 DME and hold.

ATIS 118.025	TAMPA APP CON 120.65 290.3	LAKELAND TOWER 124.5 (CTAF) 236.775	GND CON 121.4
-----------------	-------------------------------	--	------------------



ELEV 142 TDZE 132

LLEGO LAL 10.9 RADAR

AIRBS LAL 4.9 RADAR

UPDATE LAL 2.8

LAL 2.1

HANAX LAL 1.1

1000

2000

hdg 294°

LAL R-330

PLUMY

*720 when using Plant City altimeter setting.

2.98°

TCH 52

700

6 NM

2.1 NM

0.7

1 NM

CATEGORY	A	B	C	D
S-9	700-1/2	568 (600-1/2)	700-1 1/4	568 (600-1 1/4)
CIRCLING	700-1	558 (600-1)	700-2	558 (600-2)

UPDATE FIX MINIMUMS				
S-9	500-1/2	368 (400-1/2)	500-3/4	368 (400-3/4)
CIRCLING	600-1	660-1	660-1 1/2	700-2
	458 (500-1)	518 (600-1)	518 (600-1 1/2)	558 (600-2)

HIRL Rwy 5-23 and 9-27

FAF to MAP 3.8 NM

Knots	60	90	120	150	180
Min:Seq	3:48	2:32	1:54	1:31	1:16

TWR 285

8499 X 150

096° 3.8 NM from FAF

2205 X 60