

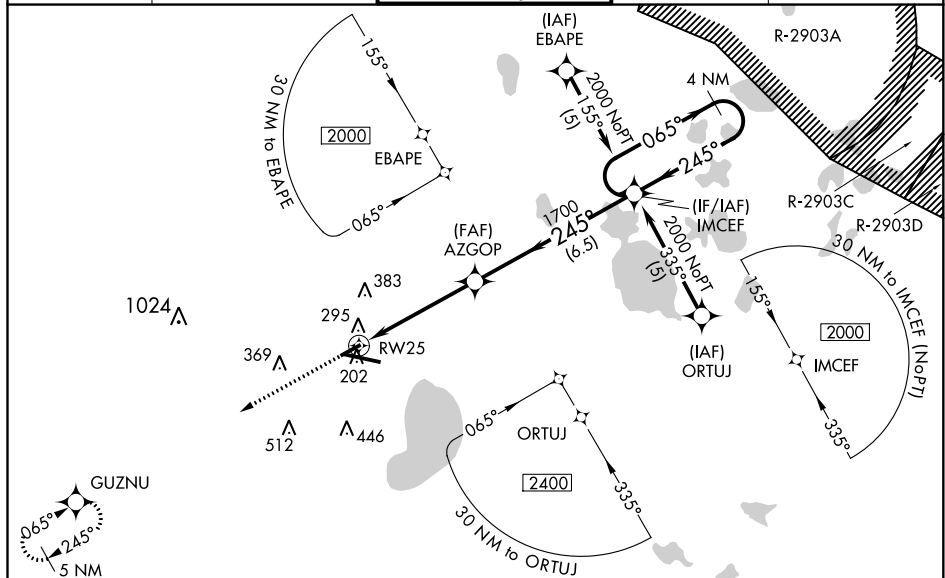
WAAS CH <b>86604</b> <b>W25A</b>	APP CRS <b>245°</b>	Rwy Idg <b>4158</b> TDZE <b>144</b> Apt Elev <b>151</b>
--	------------------------	---

RNAV (GPS) RWY 25  
GAINESVILLE RGNL (GNV)

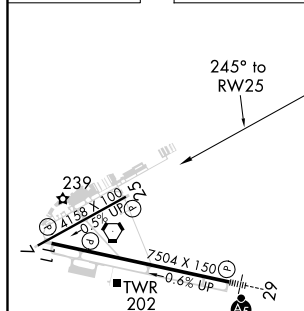
**Baro-VNAV NA** when using Ocala Int'l-Jim Taylor altimeter setting. For uncompensated Baro-VNAV systems, INAV/VNAV NA below -15° C (5° F) or above 48° C (118° F). DME/DME RNP-0.3 NA. Visibility reduction by helicopters NA. When local altimeter setting not received, use Ocala Int'l-Jim Taylor Field altimeter setting and increase all DA 81 feet and all MDA 100 feet. Increase LPV all Cats, INAV/VNAV all Cats, INAV Cat C and Circling Cat D visibility ½ mile. Increase INAV Cat D visibility ½ mile. When VGSI inoperative, straight-in/Circling Rwy 25 procedure NA at night.

**MISSED APPROACH:** Climb to 2100 direct GUZNU and hold.

ATIS 127.15	JACKSONVILLE APP CON 118.175 338.25	GAINESVILLE TOWER★ 119.55 (CTAF) 0 353.7	GND CON 121.7	UNICOM 122.95
----------------	--	---	------------------	------------------



ELEV 151		TDZE 144
----------	--	----------



<div style="display: flex; justify-content: space-around; align-items: center;"> <div style="text-align: center;"> <b>2100</b>  </div> <div style="text-align: center;"> <b>GUZNU</b>  </div> </div>		<div style="text-align: right;"> <b>4 NM</b>  <b>Holding Pattern</b> </div>	
<b>CATEGORY</b>		<b>A</b>	
<b>LPV DA</b>		<b>501-1¼ 357 (400-1¼)</b>	
<b>LNAV/VNAV</b>		<b>694-2 550 (600-2)</b>	
<b>LNAV MDA</b>		<b>560-1 416 (500-1) 560-1¼ 416 (500-1¼)</b>	
<b>CIRCLING</b>		<b>620-1 469 (500-1) 620-1½ 469 (500-1½) 740-2 589 (600-2)</b>	