

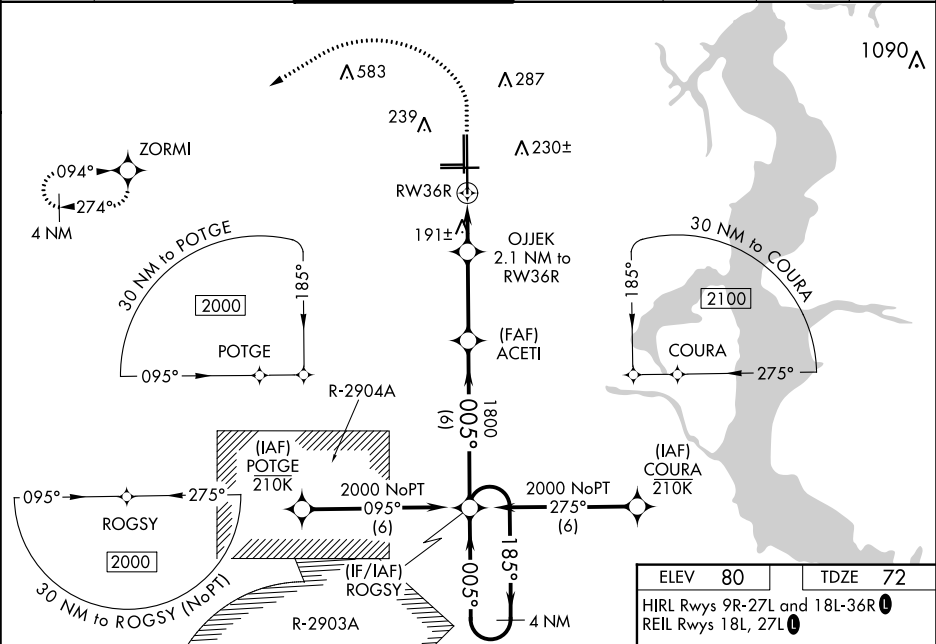
⚠

Baro-VNAV and VDP NA when using Jacksonville Intl altimeter setting.
For uncompensated Baro-VNAV systems, LNAV/VNAV NA below -15°C (5°F) or above 54°C (130°F). DME/DME RNP-0.3 NA. When local altimeter setting not received, use Jacksonville Intl altimeter setting and increase all DA 52 feet and all MDA 60 feet. Increase LNAV/VNAV all Cats visibility to 1 mile and LNAV Cats C, D visibility to ¾ mile.

MALSR

MISSED APPROACH:
Climb to 1000 then climbing left turn to 2000 direct ZORMI and hold.

ATIS 125.275	JACKSONVILLE APP CON 127.775 377.075	CECIL TOWER ★ 126.1 (CTAF) 387.025	GND CON 121.625 384.4	CLNC DEL 123.975	GCO 135.075	UNICOM 122.95
------------------------	--	--	---------------------------------	----------------------------	-----------------------	-------------------------



4 NM Holding Pattern		VGSI and RNAV glidepath not coincident (VGSI Angle 3.00/TCH 66).		1000 2000 ZORMI	
2000 ← 185°		ACETI 1800		*LNAV only.	
005° →		OJJEK 2.1 NM to RW36R		*1 NM to RW36R	
GP 3.00° TCH 49		*780		RW36R	
6 NM		3.2 NM		1.1 NM	
A		B		C	
LPV DA		272-½		200 (200-½)	
LNAV/VNAV DA		467-¾		395 (400-¾)	
LNAV MDA		460-½ 388 (400-½)		460-⅝ 388 (400-⅝)	
CIRCLING		540-1 460 (500-1)		600-1½ 520 (600-1½)	
		560-1 480 (500-1)		640-2 560 (600-2)	

