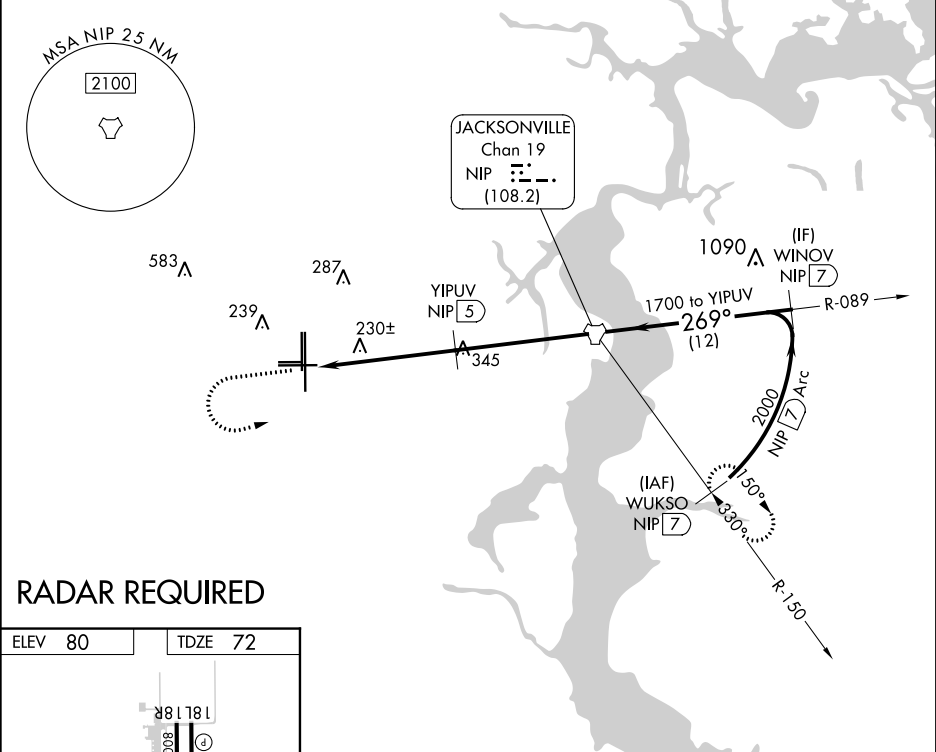


V VDP NA with Jacksonville Intl altimeter setting. Helicopter visibility reduction below ¾ SM NA. When local altimeter setting not received, use Jacksonville Intl altimeter setting and increase all MDA 60 feet, increase S-27L Cats C, D, E visibility ½ mile.

A

MISSED APPROACH: Climb to 700 then climbing left turn to 2100 direct NIP TACAN and continue on NIP TACAN R-150 to WUKSO/7 DME and hold.

ATIS	JACKSONVILLE APP CON	CECIL TOWER ★	GND CON	CLNC DEL	GCO	UNICOM
125.275	127.775 377.075	126.1 (CTAF) 387.025	121.625 384.4	123.975	135.075	122.95



RADAR REQUIRED

