

MILTON, FLORIDA

COPTER TACAN 004

TACAN NSE Chan 70	APCH CRS 004°	Rwy Idg 5996 TDZE N/A Arpt Elev 177
-----------------------------	-------------------------	--

AL-1909 [USN]

WHITING FLD NAS - SOUTH (KNDZ)



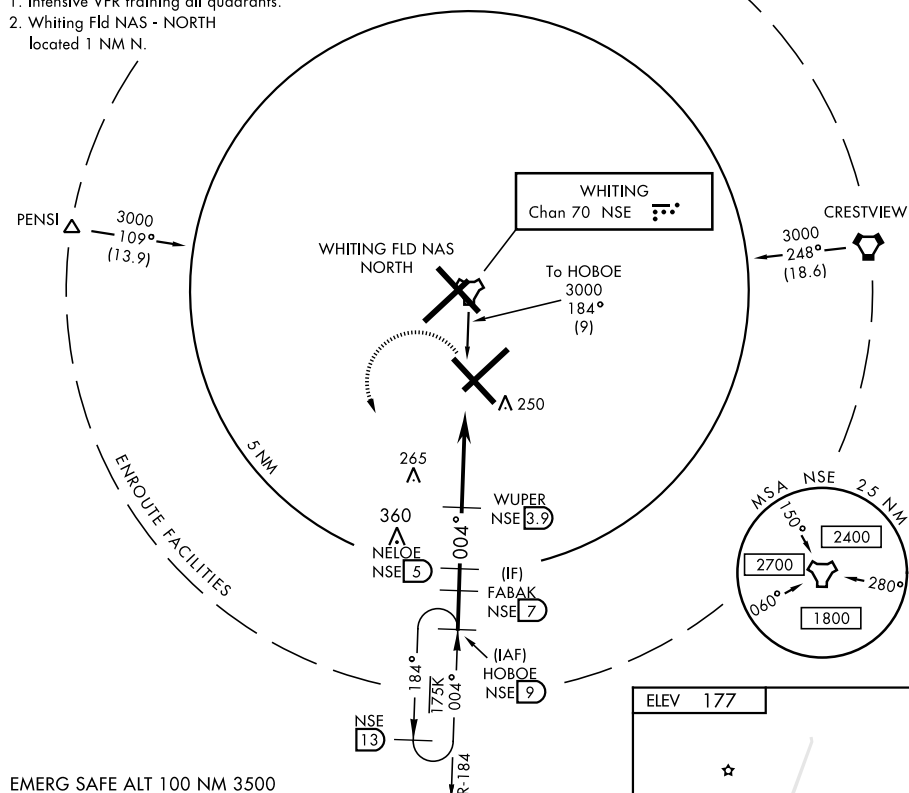
Maximum airspeed 90 KIAS.

MISSED APPROACH: Climb to 700. Then climbing left turn to 3000. Intercept NSE TACAN R-184 to HOBEO and hold. Contact Pensacola Approach Control.

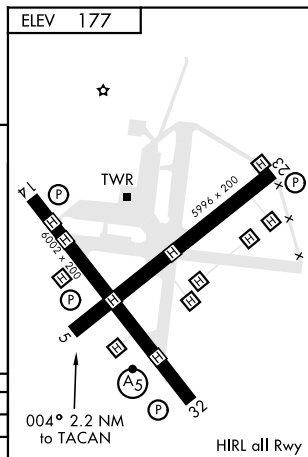
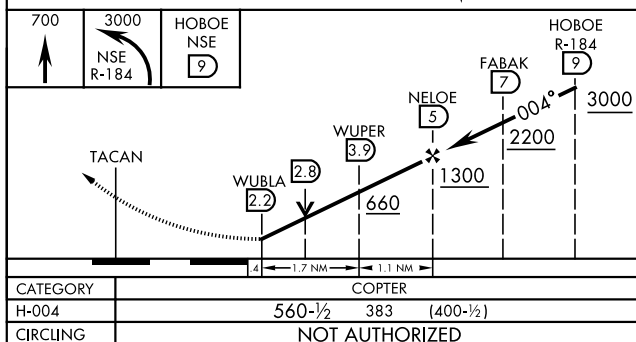
ATIS ★ 273.575	PENSACOLA APP CON 124.85 385.4	SOUTH WHITING TOWER ★ 121.4 348.675	GND CON 317.65	CLNC DEL 355.6	ASR/ PAR
-------------------	-----------------------------------	---	-------------------	-------------------	-------------

CAUTION:

1. Intensive VFR training all quadrants.
2. Whiting Fld NAS - NORTH
located 1 NM N.



EMERG SAFE ALT 100 NM 3500



MILTON, FLORIDA

30°42'N-87°01'W

WHITING FLD NAS - SOUTH (KNDZ)

Amdt 6 10SEP20

COPTER TACAN 004

SE-3, 03 DEC 2020 to 31 DEC 2020