

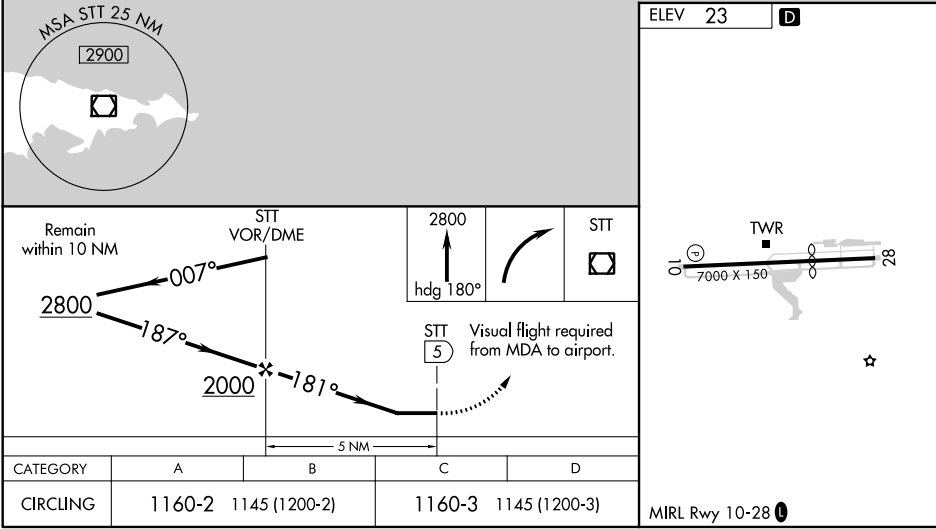
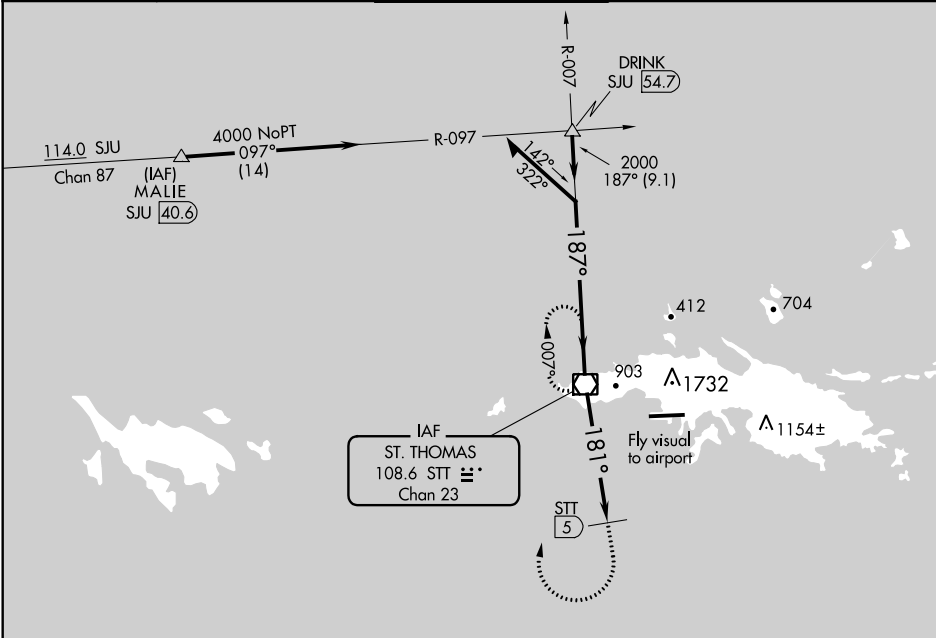
VOR/DME STT	APP CRS	Rwy Idg TDZE	N/A
108.6	181°	Apt Elev	N/A
Chan 23			23

VOR-A

CYRIL E KING (STT)(TIST)

<div><div></div><div>CAUTION: High terrain north of Rwy 10-28 extended. Circling north of Rwy 10-28 NA. Procedure NA when control tower not in operation. Procedure NA at night.</div></div>	<div>MISSED APPROACH: If unable to proceed visually to airport upon descent to 1160, climb to 2800 via heading 180°, then right turn direct STT VOR/DME and hold.</div>
--	---

ATIS 124.0	SAN JUAN CENTER 128.65 279.6	ST. THOMAS TOWER ★ 118.8 (CTAF) 0 257.6 118.1 (NORTH OF ISLAND)	GND CON 121.9	UNICOM 122.95
---------------	---------------------------------	---	------------------	------------------



VOR-A

SE-3, 03 DEC 2020 to 31 DEC 2020

SE-3, 03 DEC 2020 to 31 DEC 2020