

VOR/DME COY

108.2

Chan 19

APP CRS

259°

Rwy ldg

9003

TDZE

43

Apt Elev

65

VOR RWY 28

HENRY E ROHLSSEN (STX)(TISX)

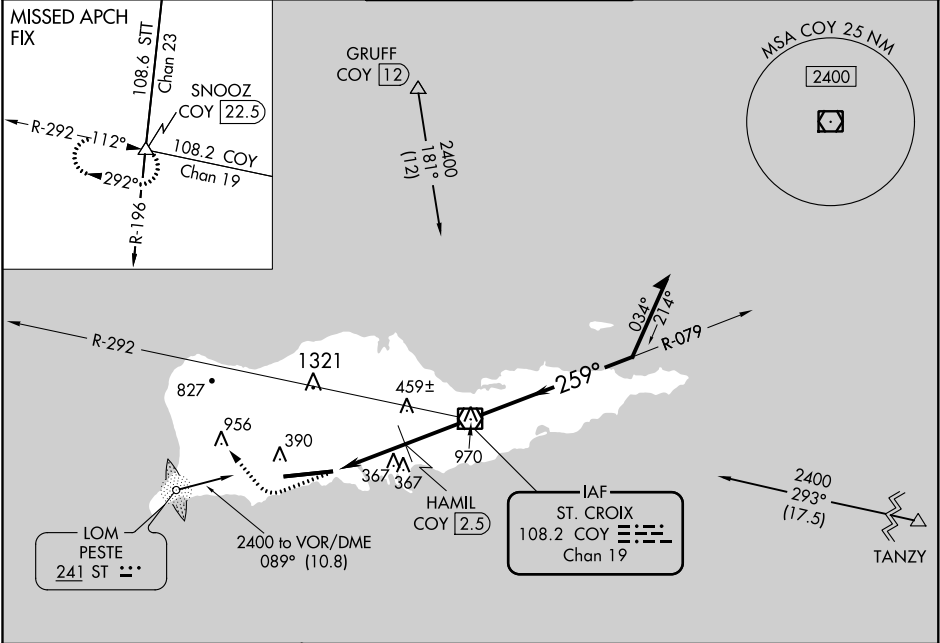
▼

⚠

Helicopter visibility reduction below 1 SM NA. Rwy 28 Straight-in and Circling minimums NA at night. When local altimeter setting not received, procedure NA. Circling NA north of Rwy 10-28.

MISSED APPROACH: Climb to 2000 then climbing right turn to 2400 via heading 330° and COY R-292 to SNOOZ Int/COY 22.5 DME and hold.

ATIS	SAN JUAN CENTER	ST. CROIX TOWER ★	GND CON	UNICOM
135.65	128.65 279.6	118.6 (CTAF) 239.3	121.7	123.0



ELEV 65

TDZE 43

2000

2400

COY

SNOOZ

↑

hdg 330°

R-292

△

259° 5.3 NM from FAF

10004 X 150

253

0.6% DOWN

0.4% UP

TWR 141±

REIL Rwy 28

HIRL Rwy 10-28

FAF to MAP 5 NM

Knots

60

90

120

150

180

Min:Sec

5:00

3:20

2:30

2:00

1:40

VGSI and descent angles not coincident (VGSI Angle 3.00/TCH 80).

HAMIL COY 2.5

COY 5

3.23° TCH 52

960

1900

2400

079°

259°

Remain within 10 NM

CATEGORY	A	B	C	D
S-28	960-1 1/4	917 (900-1 1/4)	960-2 3/4	960-3
CIRCLING	960-1 1/4	895 (900-1 1/4)	960-2 3/4	960-3
			895 (900-2 3/4)	895 (900-3)
HAMIL FIX MINIMUMS				
S-28	640-1	597 (600-1)	640-1 1/2	640-1 3/4
			597 (600-1 1/2)	597 (600-1 3/4)
CIRCLING	640-1	575 (600-1)	640-1 1/2	680-2
			575 (600-1 1/2)	615 (700-2)