

WAAS CH 90319 W18A	APP CRS 184°	Rwy Idg TDZE Apt Elev	6557 80 90
--	------------------------	-----------------------------	---------------------------------------

RNAV (GPS) RWY 18

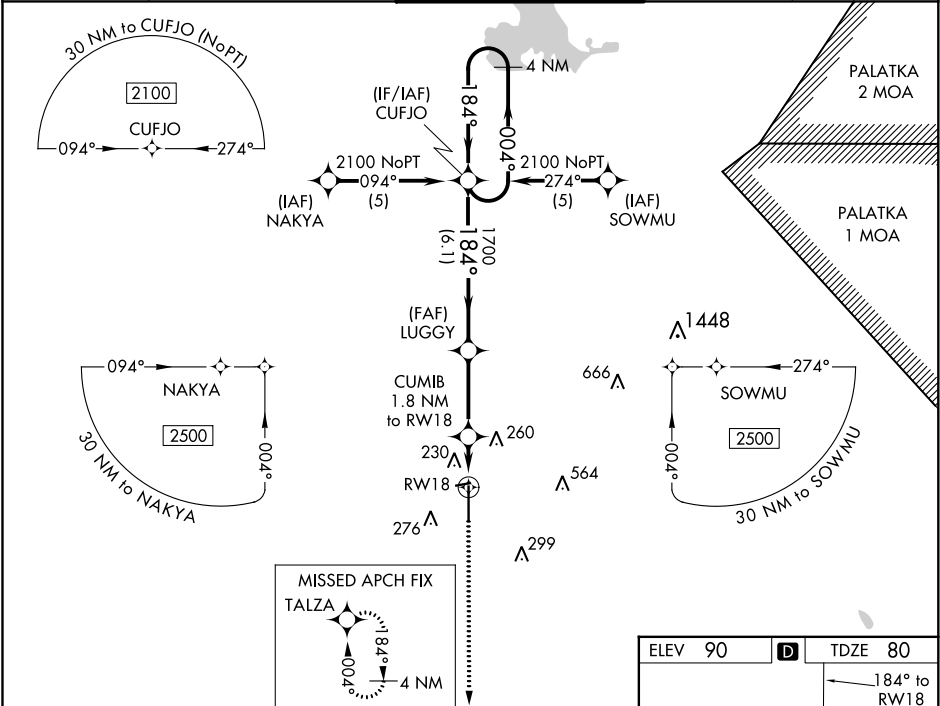
OCALA INTL-JIM TAYLOR FIELD (OCF')

⚠

For uncompensated Baro-VNAV systems, LNAV/VNAV NA below -1.5°C (5°F) or above 48°C (118°F). DME/DME RNP-0.3 NA. When local altimeter setting not received, use Gainesville altimeter setting and increase LPV DA to 361, increase LNAV/VNAV DA to 595 and all MDA 100 feet. Increase LPV and LNAV/VNAV all Cats and LNAV Cat C/D visibility ¼ mile. Baro-VNAV and VDP NA when using Gainesville altimeter setting.

MISSED APPROACH:
Climb to 2000 direct
TALZA and hold.

ATIS 128.125	JACKSONVILLE APP CON 118.6 251.15	OCALA TOWER★ 119.25 (CTAF) 0	GND CON 121.4	UNICOM 123.0
------------------------	---	--	-------------------------	------------------------



4 NM Holding Pattern		VGSI and RNAV glidepath not coincident (VGSI Angle 3.00/TCH 45).		2000	TALZA
CUFJO		LUGGY		CUMIB 1.8 NM to RW18	*LNAV only.
2100	←004°	184°→	1700	*1.1 NM to RW18	
GP 3.00° TCH 52	184°		1700	*700	
6.1 NM		3.1 NM		0.7	1.1
CATEGORY	A	B	C	D	
LPV DA	280-¾		200 (200-¾)		
LNAV/VNAV DA	514-1½		434 (500-1½)		
LNAV MDA	480-1		400 (400-1)		480-1¼ 400 (400-1¼)
CIRCLING	580-1	490 (500-1)	580-1½ 490 (500-1½)	640-2 550 (600-2)	

