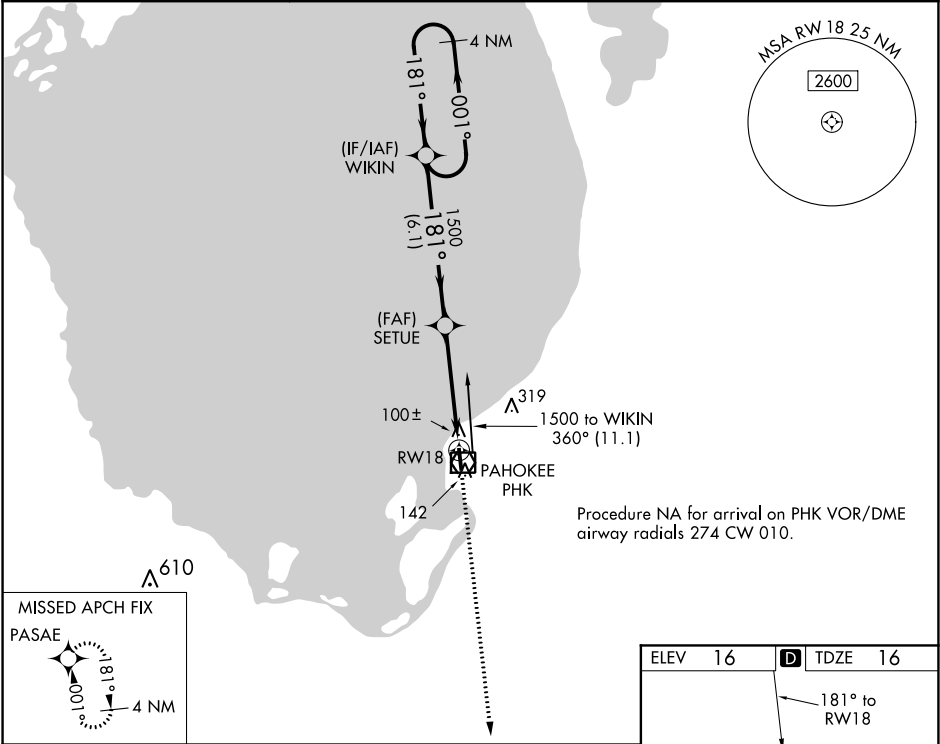


WAAS CH 53408 W18A	APP CRS 181°	Rwy Idg TDZE 16 Apt Elev 16
--	------------------------	---

RNAV (GPS) RWY 18
PALM BEACH COUNTY GLADES (PHK)

NA Baro-VNAV NA. Rwy 18 helicopter visibility reduction below ¾ SM NA. DME/DME RNP-0.3 NA. Use Palm Beach Intl altimeter setting, when not received procedure NA.	MISSED APPROACH: Climb to 2000 direct PASAE and hold.
--	---

PBI ASOS 123.75	PALM BEACH APP CON 128.3 317.4	UNICOM 122.8 (CTAF) 0
---------------------------	--	---------------------------------



VGSI and RNAV glidepath not coincident (VGSI Angle 3.00/TCH 44).			
4 NM Holding Pattern			
WIKIN			
SETUE			
RW18			
GP 3.00° TCH 55			
6.1 NM			
4.5 NM			
CATEGORY	A	B	C
LPV DA	358-1 3/8	342 (400-1 1/8)	
LNAV/VNAV DA	342-1	326 (400-1)	
LNAV MDA	440-1 424 (500-1)	440-1 1/4 424 (500-1 1/4)	
CIRCLING	580-1 564 (600-1)	760-2 1/4 744 (800-2 1/4)	760-2 1/2 744 (800-2 1/2)

