

VOR/DME MAZ  
**110.6**  
Chan **43**

APP CRS  
**081°**

Rwy Idg **4998**  
TDZE **28**  
Apt Elev **28**

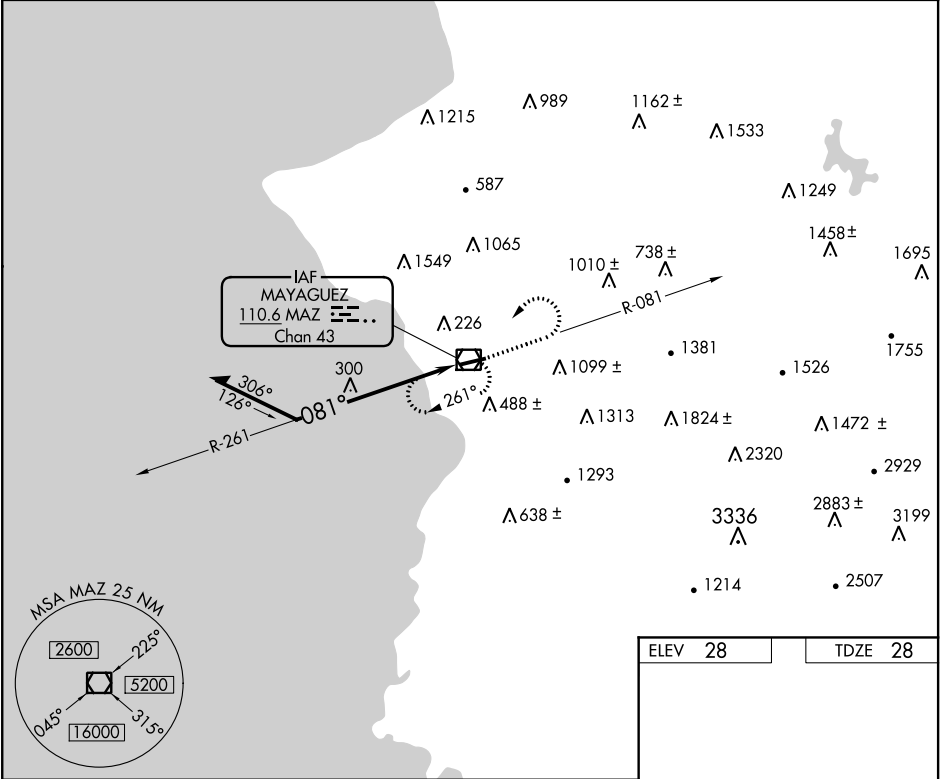
EUGENIO MARIA DE HOSTOS (MAZ)(TJMZ)

VOR RWY 9

**⚠** Circling to Rwy 27 NA at night. When VGSI inoperative, procedure NA at night. Visibility reduction by helicopters NA. When Class E surface area not in effect, except for operators with approved weather reporting service, procedure NA.

MISSED APPROACH: Climb to 2000 on MAZ VOR/DME R-081 then climbing left turn to 5000 direct MAZ VOR/DME and hold, continue climb-in-hold to 5000.

SAN JUAN CENTER <b>118.75 269.0</b>	CLNC DEL <b>121.7</b>	UNICOM <b>122.8 (CTAF) 0</b>
--	--------------------------	---------------------------------



Remain within 10 NM

MAZ VOR/DME

2600

261°

081°

2000

MAZ R-081

5000

MAZ

ELEV 28

TDZE 28

081° to MAZ VOR/DME

4998 X 100

27

79

REIL Rwy 9 0

MIRL Rwy 9-27

CATEGORY	A	B	C	D
S-9	1100-1¼ 1072 (1100-1¼)	1100-1½ 1072 (1100-1½)	1100-3 1072 (1100-3)	NA
CIRCLING	1100-1¼ 1072 (1100-1¼)	1100-1½ 1072 (1100-1½)	1100-3 1072 (1100-3)	NA