

WAAS CH <b>69529</b> <b>W10A</b>	APP CRS <b>097°</b>	Rwy Idg <b>6492</b> TDZE <b>23</b> Apt Elev <b>23</b>
--	------------------------	---

RNAV (GPS) RWY 10R

TREASURE COAST INTL (FPR)

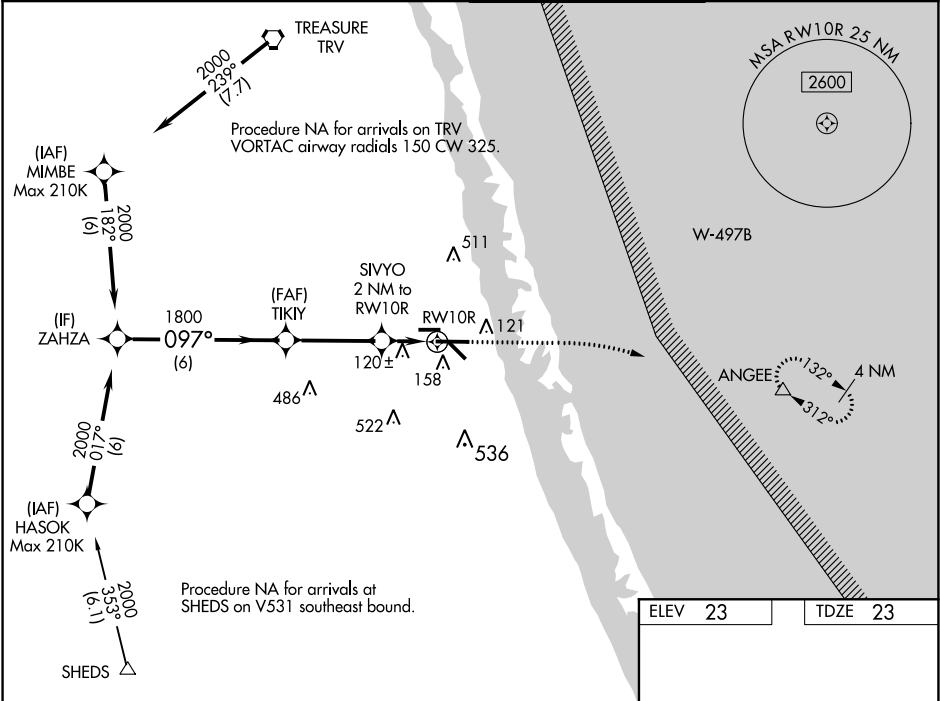
⚠

Baro-VNAV NA when using Vero Beach altimeter setting. For uncompensated Baro-VNAV systems, LNAV/VNAV NA below -1°C (31°F) or above 54°C (130°F). When local altimeter setting not received, use Vero Beach altimeter setting and increase all DA 23 feet and all MDA 40 feet; increase LPV all Cats, LNAV/VNAV all Cats and LNAV Cats C/D visibility 1⁄8 mile, and increase Circling Cat C/D visibility 1⁄4 mile. DME/DME RNP-0.3 NA. VDP NA with Vero Beach altimeter setting.

MISSED APPROACH:

Climb to 480 then climbing right turn to 2000 direct ANGEE and hold.

ATIS <b>134.825</b>	PALM BEACH APP CON <b>132.8</b>	FORT PIERCE TOWER ★ <b>128.2 (CTAF) 0</b>	GND CON <b>119.55</b>
------------------------	------------------------------------	--	--------------------------



VGSI and RNAV glidepath not coincident (VGSI Angle 3.00/TCH 52).

480

2000

ANGEE

ZAHZA

TIKIY

SIVYO

RW10R

2000

1800

158

GP 3.00°

TCH 49

6 NM

3.4 NM

1 NM

1 NM

CATEGORY

A

B

C

D

LPV DA

273-3⁄4

250 (300-3⁄4)

LNAV/VNAV DA

348-1

325 (400-1)

LNAV MDA

380-1

357 (400-1)

CIRCLING

460-1  
437 (500-1)

480-1  
457 (500-1)

880-2½  
857 (900-2½)

880-2¾  
857 (900-2¾)

REIL Rwy 10R and 28L

MIRL all Rwy 10