

WAAS  
CH **40234**  
**W17A**

APP CRS  
**175°**

Rwy Idg  
TDZE **27**  
Apt Elev **28**

**RNAV (GPS) RWY 17**

ORMOND BEACH MUNI (OMN)

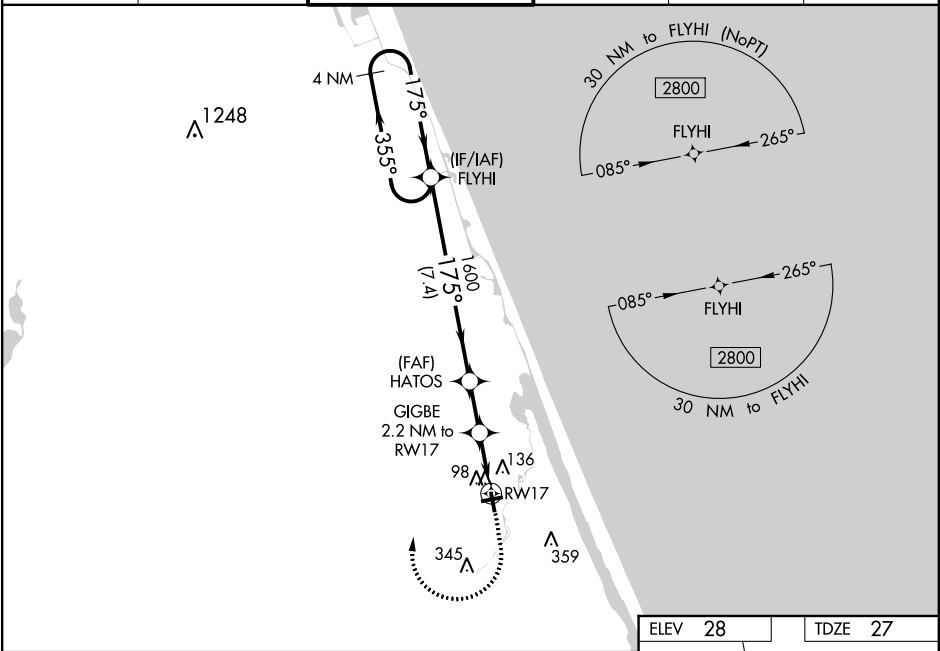
⚠

Baro-VNAV NA when using Daytona Beach altimeter setting. For uncompensated Baro-VNAV systems, LNAV/VNAV NA below -15°C (5°F) or above 54°C (130°F). DME/DME RNP-0.3 NA. Helicopter visibility reduction below ¾ SM NA. When local altimeter setting not received, use Daytona Beach altimeter setting and increase all DA 19 feet and all MDA 20 feet; increase LNAV Cat C visibility ½ mile. VDP NA when using Daytona Beach altimeter setting.

MISSED APPROACH:

Climb to 600 then climbing right turn to 2800 direct FLYHI and hold.

ATIS <b>118.475</b>	DAYTONA APP CON <b>125.8 269.075</b>	ORMOND BEACH TOWER★ <b>119.075 (CTAF)</b>	GND CON <b>121.625</b>	CLNC DEL <b>121.625</b>	UNICOM <b>123.05</b>
------------------------	---	--	---------------------------	----------------------------	-------------------------



VGSI and RNAV glidepath not coincident (VGSI Angle 3.50/TCH 51).

4 NM Holding Pattern

FLYHI

2800

355°

175°

GP 3.50° TCH 60

7.4 NM

1.9 NM

1.1 NM

1.1 NM

HATOS

1600

GIGBE 2.2 NM to RW17

\*1.1 NM to RW17

RW17

\*LNAV only.

600

2800

FLYHI

ELEV 28

TDZE 27

175° to RW17

TWR 86

4005 X 75

3704 X 100

35

CATEGORY	A	B	C	D
LPV DA	302-1	275 (300-1)		NA
LNAV/VNAV DA	288-1	261 (300-1)		NA
LNAV MDA	400-1	373 (400-1)		NA
CIRCLING	500-1	471 (500-1)	740-2 711 (800-2)	NA

REIL Rwy 9, 17, 27, and 35   
MIRL Rwy 9-27 and 17-35