

WAAS
CH **82334**
W09A

APP CRS
085°

Rwy Idg
TDZE **28**
Apt Elev **28**

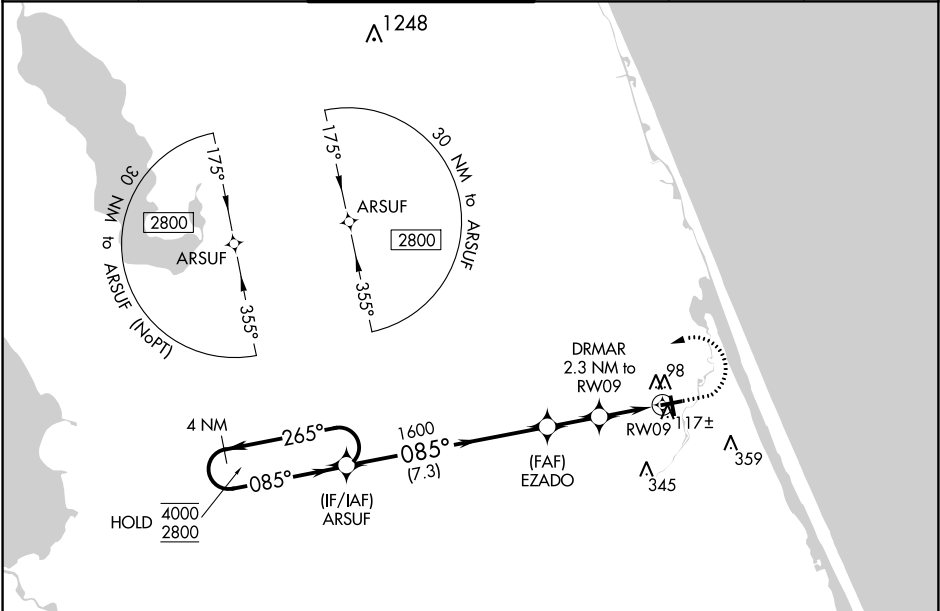
RNAV (GPS) RWY 9

ORMOND BEACH MUNI (OMN)

RNP APCH.
▼ Rwy 9 helicopter visibility reduction below ¾ SM NA. For uncompensated Baro-VNAV systems, LNAV/VNAV NA below -15° C or above 54° C. VDP NA when using Daytona Beach altimeter setting.

MISSED APPROACH: Climb to 600 then climbing left turn to 2800 direct ARSUF and hold.

ATIS 118.475	DAYTONA APP CON 125.8 269.075	ORMOND BEACH TOWER★ 119.075 (CTAF)	GND CON 121.625	CLNC DEL 121.625	UNICOM 123.05
------------------------	---	--	---------------------------	----------------------------	-------------------------



VGSI and RNAV glidepath not coincident (VGSI Angle 3.40/TCH 48).

4 NM Holding Pattern

ARSUF

600

2800

ARSUF

GP 3.40° TCH 60

4000

2800

265°

085°

085°

1600

1600

900

7.3 NM

1.9 NM

1.5 NM

0.8 NM

DRMAR 2.3 NM to RW09

*0.8 NM to RW09

RW09

*LNAV only.

CATEGORY	A	B	C	D
LPV DA	313-1	285 (300-1)		NA
LNAV/VNAV DA	278-1	250 (300-1)		NA
LNAV MDA	380-1	352 (400-1)		NA
CIRCLING	500-1	472 (500-1)	740-2 712 (800-2)	NA

REIL Rwy 9, 17, 27 and 35

MIRL Rwy 9-27 and 17-35