

HI-ILS or LOC RWY 26

LOC I-PEK 110.3	APCH CRS 257°	Rwy Idg TDZE Arprt Elev 10,000 27 29
---------------------------	-------------------------	--

JAL-5570 [USAF]

JACKSONVILLE INTL (KJAX)

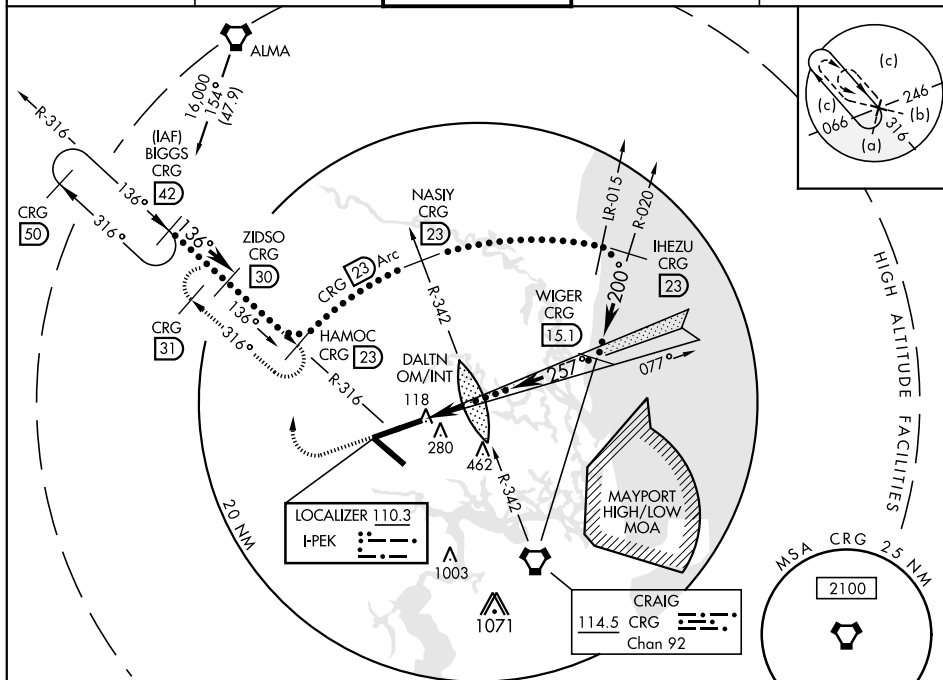
▼ * When ALS inop, increase RVR to 40, vis to $\frac{3}{4}$ mile.
 ** When ALS inop, increase vis to 1 $\frac{3}{4}$ miles.
 *** When ALS inop, increase RVR to 55, vis to 1 mile.

MALSR



MISSED APPROACH: Climb to 1200 then climbing right turn to 4000 on heading 360° and CRG R-316 to HAMOC 23 DME and hold, continue climb-in-hold to 4000.

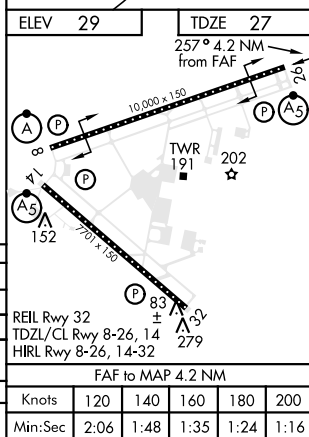
ATIS 125.85	JACKSONVILLE APP CON 119.0 269.9	JACKSONVILLE TOWER 118.3 317.7	GND CON 121.9 348.6	CLNC DEL 119.5 290.275
-----------------------	--	--	-------------------------------	----------------------------------



DME REQUIRED

EMERG SAFE ALT 100 NM 2800 FROM CRG VORTAC

1200	4000	BIGGS R-316	ZIDSO R-316	HAMOC R-316	NASIY R-342	IHEZU R-020
↑	↪	CRG R-316	CRG R-316	CRG R-316	CRG R-342	CRG R-020
16,000	13,600	6000	4000	4000	4000	2000
VGSI and ILS glidepath not coincident. (VGSI angle 3.00/TCH 70).	↑ LOC only	↑ ZETRI INT R-328 RADAR	DALTN/RADAR OM/INT R-342	WIGER Intep Lczr R-020		
GS 3.00° TCH 49		520	1411	1600		
		1.2 NM	3.0 NM			
CATEGORY	C	D	E			
S-ILS 26*	227/18	200 (200- $\frac{3}{4}$)				
S-LOC 26**	520/50	493 (500-1)				
CIRCLING	520-1 $\frac{1}{2}$ 491 (500-1 $\frac{1}{2}$)	640-2 611 (700-2)	760-2 $\frac{1}{2}$ 731 (800-2 $\frac{1}{2}$)			
ZETRI FIX MINIMUMS (DUAL VOR RECEIVERS REQUIRED)						
S-LOC 26 †	400/35	373 (400- $\frac{3}{4}$)				



HI-ILS or LOC RWY 26