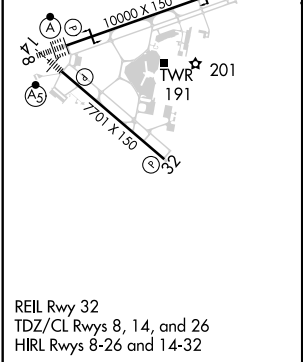
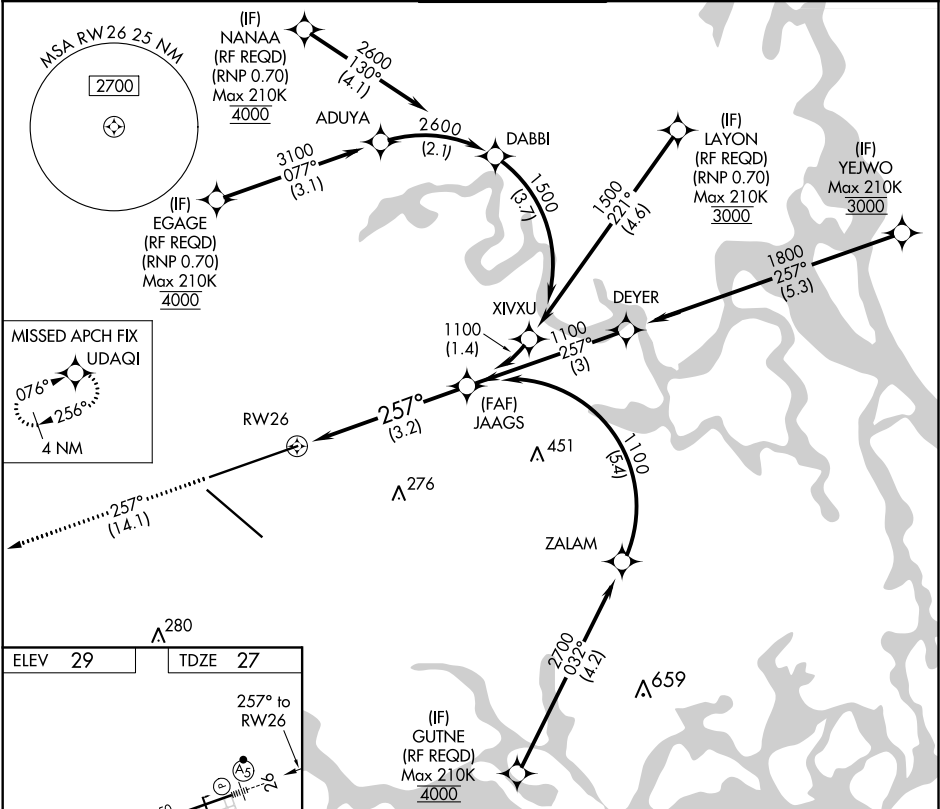

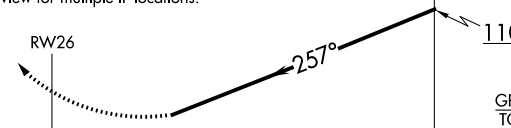


APP CRS	Rwy Idg	10000
257°	TDZE	27
	Apt Elev	29

RNAV (RNP) Y RWY 26  
JACKSONVILLE INTL (JAX)

For uncompensated Baro-VNAV systems, procedure NA below -5°C (23°F) or above 54°C (130°F). GPS required. For inoperative MALS, increase RNP 0.30 all Cats visibility to 1¼ mile.			MALS	MISSED APPROACH: Climb to 2000 on track 257° to UDAQI and hold.
D-ATIS	JACKSONVILLE APP CON	JACKSONVILLE TOWER	GND CON	CLNC DEL
125.85	119.0 269.9	118.3 317.7	121.9 348.6	119.5 290.275



2000 ↑ tr 257°	UDAQI 	VGSI and RNAV glidepath not coincident (VGSI Angle 3.00/TCH 70).			
See planview for multiple IF locations.					
					
CATEGORY	A	B	C	D	
RNP 0.30 DA	400/40 373 (400-¾)				
AUTHORIZATION REQUIRED					

SE-3, 03 DEC 2020 to 31 DEC 2020

SE-3, 03 DEC 2020 to 31 DEC 2020