

WAAS CH 70626 W14A	APP CRS 136°	Rwy Idg TDZE 27 Apt Elev 29	7701
--	------------------------	---	-------------

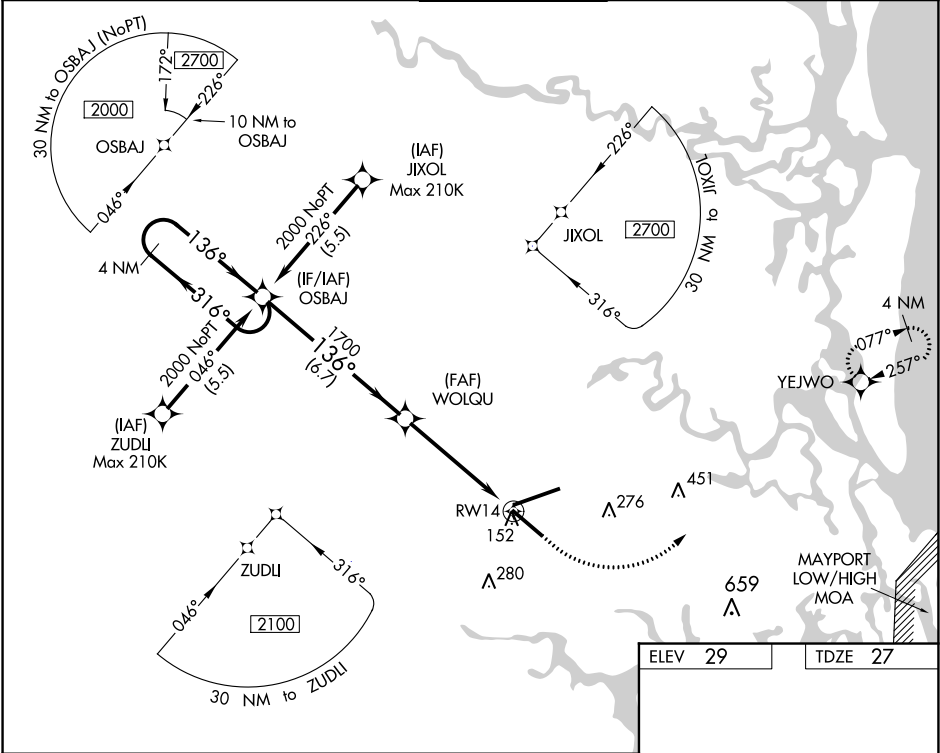
RNAV (GPS) Z RWY 14
JACKSONVILLE INTL (JAX)

▼ For uncompensated Baro-VNAV systems, LNAV/VNAV NA below -5°C (23°F) or above 54°C (130°F). For inoperative MALSR, increase LNAV/VNAV all Cts visibility to 1½ miles and increase LNAV Cts A/B to 1 mile. DME/DME RNP-0.3 NA. Helicopter visibility reduction below ¾ SM NA.

MALSR

MISSED APPROACH:
Climb to 500 then
climbing left turn to 2000
direct YEJWO and hold.

D-ATIS 125.85	JACKSONVILLE APP CON 119.0 269.9	JACKSONVILLE TOWER 118.3 317.7	GND CON 121.9 348.6	CLNC DEL 119.5 290.275
-------------------------	--	--	-------------------------------	----------------------------------



4 NM Holding Pattern

VGSI and RNAV glidepath not coincident (VGSI Angle 3.00/TCH 70).

500 2000 YEJWO

GP 3.00° TCH 54

OSBAJ WOLQU

136° to RWY 14

CATEGORY	A	B	C	D
LPV DA		227-½	200 (200-½)	
LNAV/VNAV DA		363-¾	336 (400-¾)	
LNAV MDA	480-¾	453 (500-¾)	480-⅞	453 (500-⅞)
CIRCLING	520-1	491 (500-1)	520-1½ 491 (500-1½)	640-2 611 (700-2)

REIL Rwy 32
TDZ/CL Rwy 8, 14, and 26
HIRL Rwy 8-26 and 14-32

SE-3, 03 DEC 2020 to 31 DEC 2020

SE-3, 03 DEC 2020 to 31 DEC 2020