

WAAS CH 97626 W26A	APP CRS 257°	Rwy Idg 10000 TDZE 27 Apt Elev 29
--	------------------------	--


RNAV (GPS) Z RWY 26

JACKSONVILLE INTL (JAX)

▼

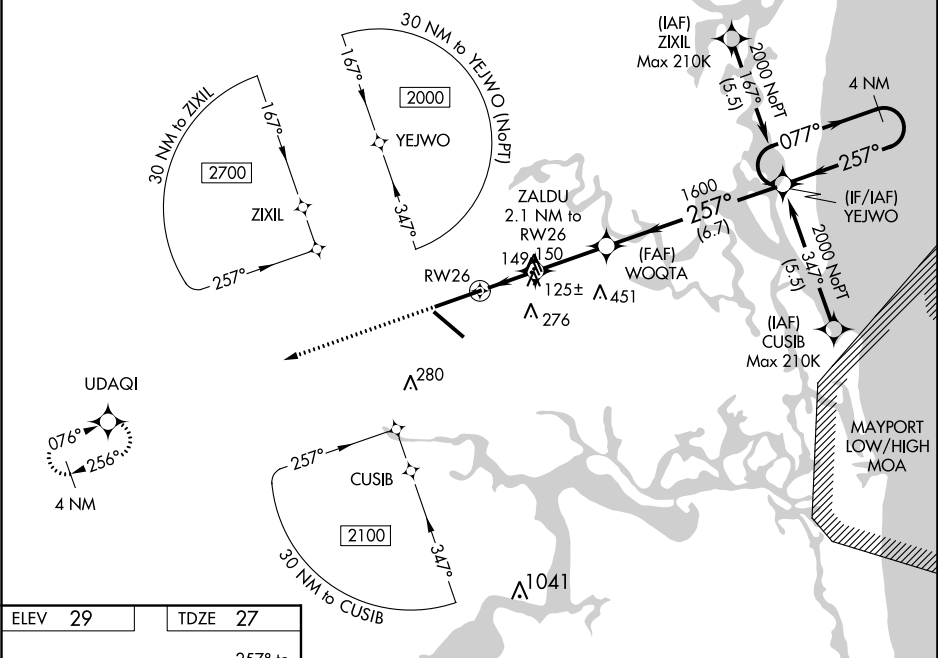
For uncompensated Baro-VNAV systems, LNAV/VNAV NA below -5°C (23°F) or above 54°C (130°F). For inoperative MALS/R, increase LNAV/VNAV all Cats visibility to RVR 4500 and increase LNAV Cats C/D visibility to RVR 5500. DME/DME RNP-0.3 NA.

MALS/R



MISSED APPROACH: Climb to 2000 direct UDAQI and hold.

D-ATIS 125.85	JACKSONVILLE APP CON 119.0 269.9	JACKSONVILLE TOWER 118.3 317.7	GND CON 121.9 348.6	CLNC DEL 119.5 290.275
-------------------------	--	--	-------------------------------	----------------------------------



ELEV 29

TDZE 27

REIL Rwy 32

TDZ/CL Rwy 8, 14, and 26

HRL Rwy 8-26 and 14-32

3000 ↑ UDAI					VGS and RNAV glidepath not coincident (VGS Angle 3.00/TCH 70).					4 NM Holding Pattern				
*LNAV only.					ZALDU 2.1 NM to RW26					WOQTA 1600				
*1 NM to RW26					*740					257°				
1 NM					1.1 NM					2.7 NM				
CATEGORY					A					B				
LPV DA					227/18					200 (200-½)				
LNAV/VNAV DA					297/24					270 (300-½)				
LNAV MDA					400/24					373 (400-½)				
CIRCLING					520-1					491 (500-1)				
										520-1½				
										491 (500-1½)				
										640-2				
										611 (700-2)				