

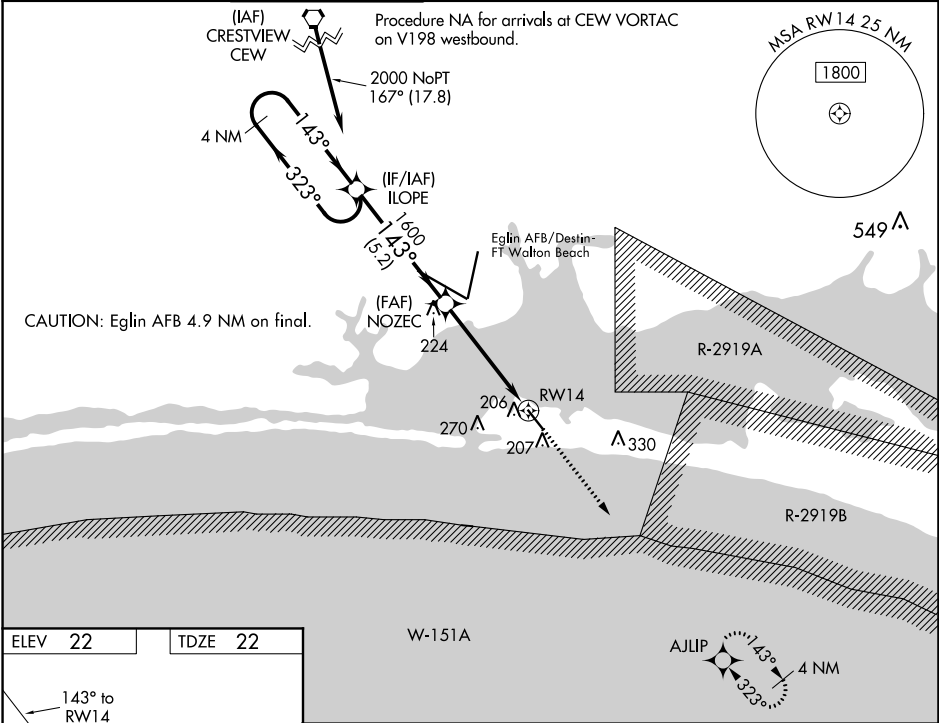
WAAS CH 48923 W14A	APP CRS 143°	Rwy Idg 5001 TDZE 22 Apt Elev 22
--	------------------------	---

RNAV (GPS) RWY 14
DESTIN EXECUTIVE (DTS)

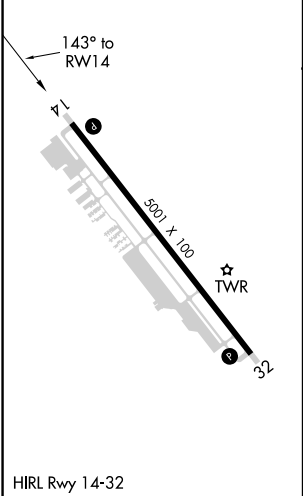
For uncompensated Baro-VNAV systems, LNAV/VNAV NA below 0°C (32°F) or above 54°C (130°F).
Baro-VNAV and VDP NA when using Crestview altimeter setting. Rwy 14 helicopter visibility reduction below ¾ SM NA. DME/DME RNP-0.3 NA. When local altimeter setting not received, use Crestview altimeter setting and increase all DA/MDA 80 feet; increase LPV all Cats visibility ½ SM, LNAV/VNAV all Cats visibility ¾ SM, increase LNAV Cats C and D ½ SM, and Circling Cats C and D ¾ SM.

MISSED APPROACH:
Climb to 2000 direct
AJUP and hold.

ATIS 133.925	EGLIN APP CON 132.1 360.6	DESTIN TOWER ★ 118.45 (CTAF) 0	GND CON 121.6	CLNC DEL 121.6	CLNC DEL 127.7 377.2 (When twr closed)	UNICOM 123.075
------------------------	-------------------------------------	---	-------------------------	--------------------------	---	--------------------------



ELEV 22	TDZE 22
----------------	----------------



<div>4 NM Holding Pattern</div> <div><div>2000</div><div>323°</div><div>143°</div></div> <div><div>ILOPE</div><div>NOZEC</div><div>1600</div><div>143°</div><div>1600</div><div>*1.2 NM to RW14</div><div>RW14</div><div>GP 3.00°</div><div>TCH 43</div></div> <div><div>2000</div><div>AJLIP</div><div>*LNAV only.</div></div>									
CATEGORY		A		B		C		D	
LPV DA		272-1		250 (300-1)					
LNAV/VNAV DA		367-1½		345 (400-1½)					
LNAV MDA		460-1 438 (500-1)		460-1¼ 438 (500-1¼)					
CIRCLING		580-1 558 (600-1)		680-1¾ 658 (700-1¾)		680-2 658 (700-2)			