

WAAS CH 58035 W09A	APP CRS 095°	Rwy Idg 10499 TDZE 13 Apt Elev 13
--	------------------------	--

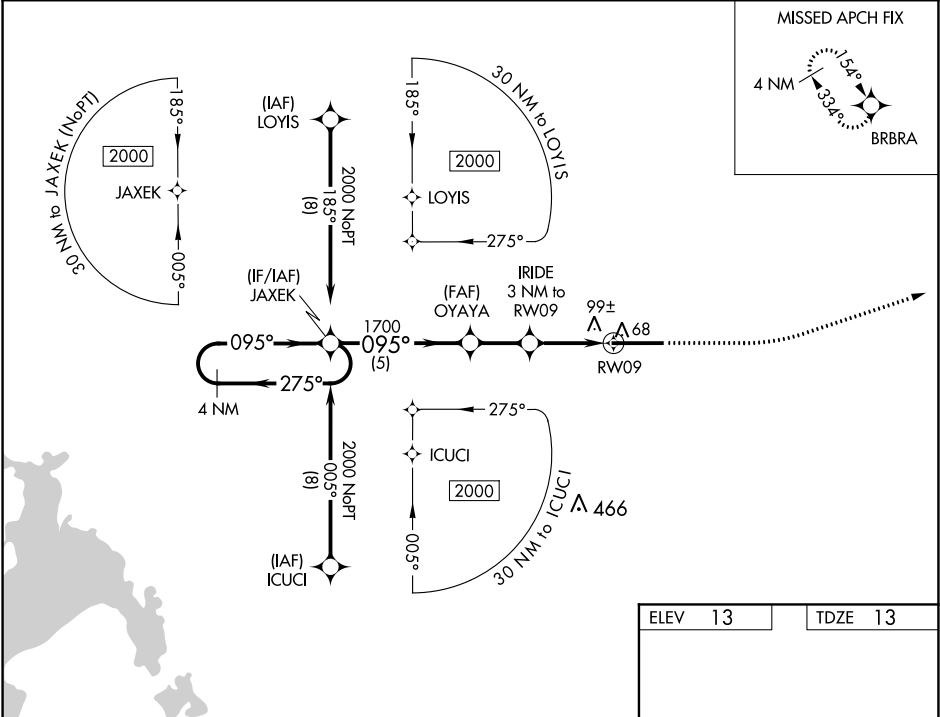
RNAV (GPS) RWY 9

DADE-COLLIER TRAINING AND TRANSITION (TNT)

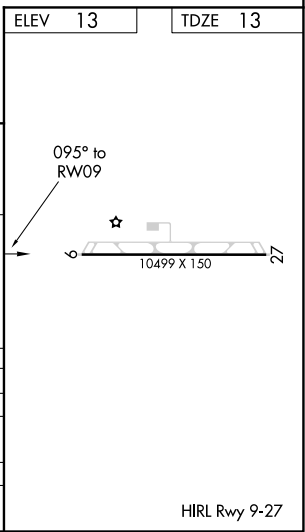
NA Baro-VNAV NA when using Miami Executive altimeter setting. For uncompensated Baro-VNAV systems, LNAV/VNAV NA below -15°C (5°F) or above 54°C (130°F). Rwy 9 helicopter visibility reduction below 1 SM NA. DME/DME RNP-0,3 NA. Procedure NA at night. When local altimeter setting not received, use Miami Executive altimeter setting and increase LPV DA to 279 feet; increase LNAV/VNAV DA to 346; and increase all MDA 80 feet; increase LNAV Cats C and D visibility ¼ SM.

MISSED APPROACH: Climb to 1000 then climbing left turn to 2000 direct BRBRA and hold.

AWOS-3 119.075	MIAMI APP CON 128.6 306.975	UNICOM 123.0 (CTAF)
--------------------------	---------------------------------------	-------------------------------



4 NM Holding Pattern		JAXEK	OYAYA	IRIDE 3 NM to RWY 9	RWY 9
2000		1700	1020		
GP 3.00° TCH 55					
5 NM		2.1 NM	3 NM		
CATEGORY		A	B	C	D
LPV DA			213-1	200 (200-1)	
LNAV/VNAV DA			280-1	267 (300-1)	
LNAV MDA			360-1	347 (400-1)	
CIRCLING		400-1 387 (400-1)	480-1 467 (500-1)	480-1½ 467 (500-1½)	580-2 567 (600-2)



SE-3, 03 DEC 2020 to 31 DEC 2020

SE-3, 03 DEC 2020 to 31 DEC 2020