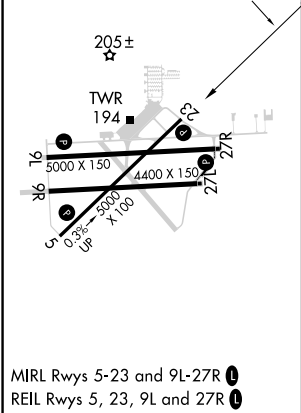
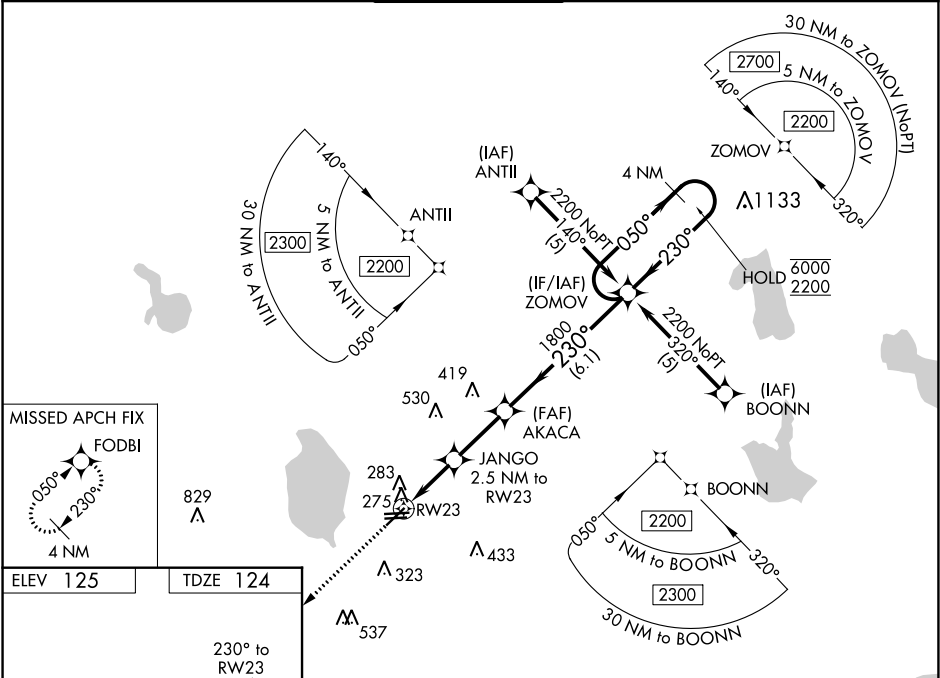


WAAS CH 63112 W23A	APP CRS 230°	Rwy Idg TDZE 124 Apt Elev 125
--	------------------------	---

RNAV (GPS) RWY 23
BARTOW EXECUTIVE (BOW)

RNP APCH. ⚠ Rwy 23 helicopter visibility reduction below ¼ SM NA. When local altimeter setting not received, use Tampa Intl altimeter setting and increase LPV DA to 560 feet, LNAV/VNAV DA to 681 feet and all MDA 120 feet, increase LPV all Cats visibility ¼ SM, LNAV/VNAV all Cats ½ SM, LNAV Cat C ¼ SM, Cat D ½ SM. For uncompensated Baro-VNAV systems, LNAV/VNAV NA below -15°C or above 54°C. VDP and Baro-VNAV NA when using Tampa Intl altimeter setting.	MISSED APPROACH: Climb to 2300 direct FODBI and hold.
--	---

AWOS-3 123.775	TAMPA APP CON 120.65 290.3	BARTOW TOWER ★ 121.20 (CTAF)	GND CON 121.9	UNICOM 122.95
--------------------------	--------------------------------------	--	-------------------------	-------------------------



2300 FODBI	VGSI and RNAV glidepath not coincident (VGSI Angle 3.50/TCH 46).
*LNAV only.	AKACA 1800
JANGO 2.5 NM to RWY 23	ZOMOV 4 NM Holding Pattern
*1.1 NM to RWY 23	6000 2200
980*	GP 3.00° TCH 60
1.1 1.4 2.5 NM 6.1 NM	
CATEGORY	A B C D
LPV DA	454-1 330 (400-1)
LNAV/VNAV DA	575-1½ 451 (500-1½)
LNAV MDA	580-1 456 (500-1) 580-1½ 456 (500-1½) 580-1½ 456 (500-1½)