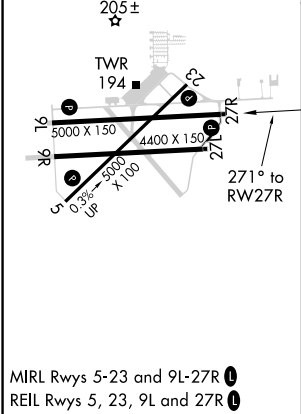
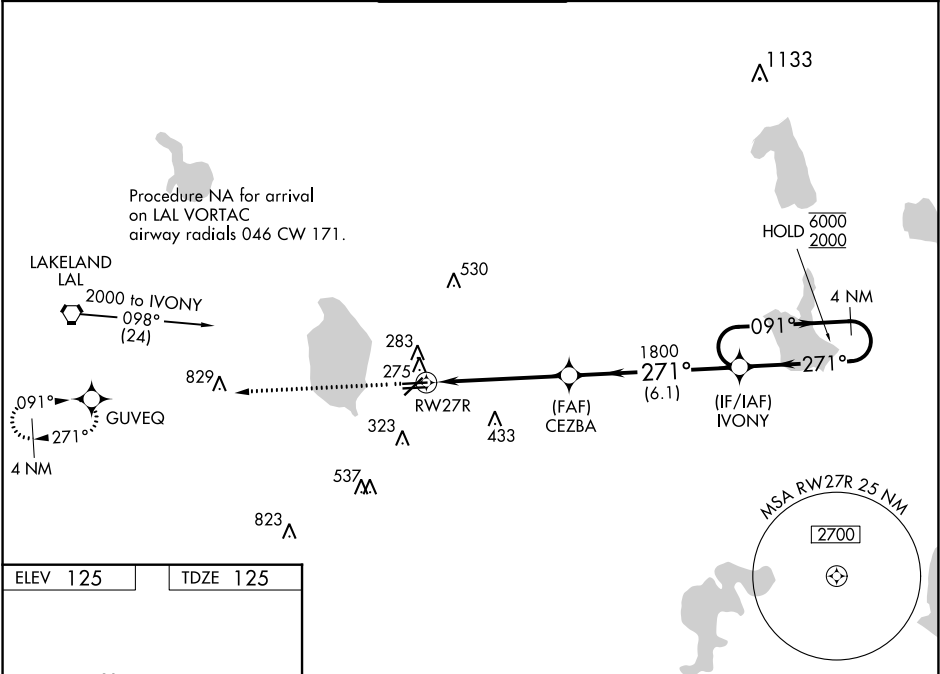


WAAS CH 82412 W27A	APP CRS 271°	Rwy Idg TDZE Apt Elev	5000 125 125
--	------------------------	-----------------------------	---

RNAV (GPS) RWY 27R
BARTOW EXECUTIVE (BOW)

RNP APCH.	MISSED APPROACH: Climb to 2000 direct GUYEQ and hold.
Rwy 27R helicopter visibility reduction below 3/4 SM NA. When local altimeter setting not received, use Tampa Intl altimeter setting and increase LPV DA to 576 feet, LNAV/VNAV DA to 636 feet and all MDA 120 feet, increase LPV visibility all Cats 1/2 SM, increase LNAV visibility Cat C 1/4 SM, Cat D 1/8 SM. For uncompensated Baro-VNAV systems, LNAV/VNAV NA below -15°C or above 54°C. VDP and Baro-VNAV NA when using Tampa Intl altimeter setting.	

AWOS-3 123.775	TAMPA APP CON 120.65 290.3	BARTOW TOWER ★ 121.2 (CTAF)	GND CON 121.9	UNICOM 122.95
--------------------------	--------------------------------------	---------------------------------------	-------------------------	-------------------------



2000	GUYEQ
*LNAV only.	
RW27R 1.4 3.7 NM 6.1 NM	
CEZBA 1800 271° 1800	
IVONY 4 NM Holding Pattern 091° 6000 271° 2000	
GP 3.00° TCH 35	
CATEGORY	A B C D
LPV DA	470-1 1/4 345 (400-1 1/4)
LNAV/VNAV DA	530-1 1/2 405 (500-1 1/2)
LNAV MDA	580-1 455 (500-1) 580-1 3/8 455 (500-1 3/8) 580-1 1/2 455 (500-1 1/2)

SE-3, 03 DEC 2020 to 31 DEC 2020

SE-3, 03 DEC 2020 to 31 DEC 2020