

WAAS
CH **50319**
W27A

APP CRS
271°

Rwy Idg **6002**
TDZE **13**
Apt Elev **13**

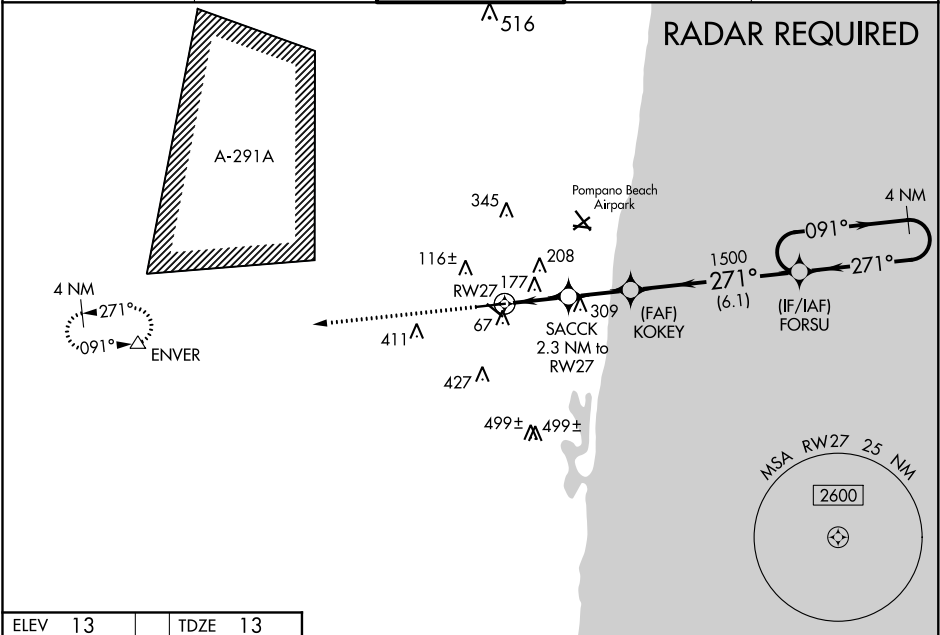
RNAV (GPS) RWY 27

FORT LAUDERDALE EXECUTIVE (FXXE)

⚠ For uncompensated Baro-VNAV systems, LNAV/VNAV NA below 4°C (40°F) or above 54°C (130°F). DME/DME RNP-0.3 NA. When local altimeter setting not received, use Fort Lauderdale/Hollywood Intl altimeter setting and increase LPV DA to 414; LNAV/VNAV DA to 468. Increase all MDA 20 feet and increase LPV all Cats and LNAV Cats C/D visibility to 1 3/8. Baro-VNAV and VDP NA when using Fort Lauderdale/Hollywood Intl altimeter setting. Helicopter visibility reduction below 3/4 SM NA.

MISSED APPROACH: Climb to 2000 direct ENVER and hold.

ATIS 119.85	MIAMI APP CON 119.7 306.3	EXECUTIVE TOWER 120.9 239.3	GND CON 121.75	CLNC DEL 127.95
-----------------------	-------------------------------------	---------------------------------------	--------------------------	---------------------------



ELEV 13

TDZE 13

2000

ENVER

↑

△

VGSI and RNAV glidepath not coincident
(VGSI Angle 3.25/TCH 56).

4 NM Holding Pattern

FORSU

091°

271°

2000

GP 3.00°
TCH 45

*LNAV only

KOKEY

1500

SACCK 2.3 NM to RW27

*1.1 NM to RW27

RW27

*780

1500

271°

1.1

1.2 NM

2.2 NM

6.1 NM

AS

13

6002 X 100

27

4000 X 100

75

TWR

271° to RW27

HIRL Rwy 9-27
MIRL Rwy 13-31
REIL Rwy 13, 27 and 31

CATEGORY	A	B	C	D
LPV DA	396-1 383 (400-1 1/4)			
LNAV/VNAV DA	450-1 437 (500-1 1/2)			
LNAV MDA	440-1 427 (500-1)		440-1 427 (500-1 1/4)	
CIRCLING	520-1 507 (600-1)	620-1 607 (700-1)	780-2 1/4 767 (800-2 1/4)	780-2 1/2 767 (800-2 1/2)