

VENICE, FLORIDA

AL-5960 (FAA)

19059

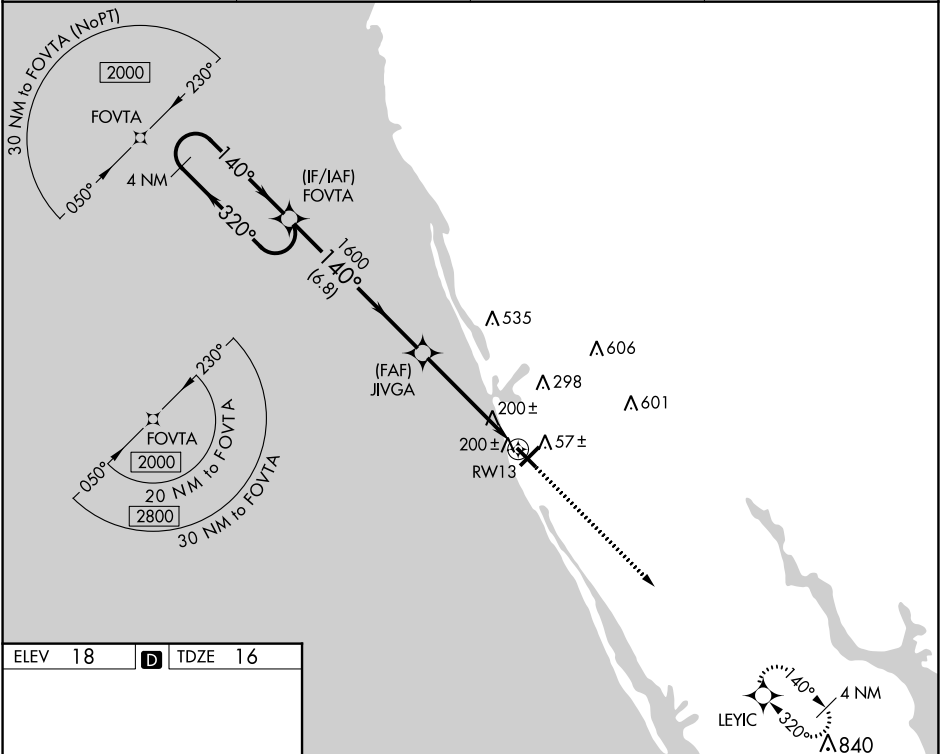
WAAS CH 86423 W13A	APP CRS 140°	Rwy Idg TDZE 16 Apt Elev 18	4999
--	------------------------	---	-------------

RNAV (GPS) RWY 13

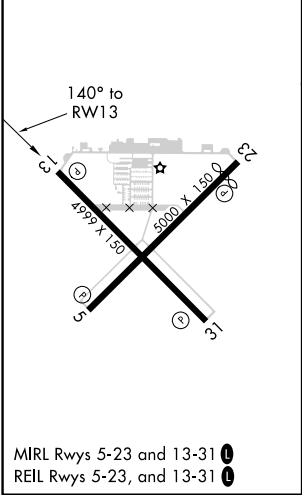
VENICE MUNI (VNC)

<div><div>▼</div><div>▲</div></div> <div>DME/DME RNP-0.3 NA. Helicopter visibility reduction below ¾ SM NA. When local altimeter setting not received, use Sarasota altimeter setting and increase all MDA 60 feet and Circling Cat C visibility ¼ mile.</div>	MISSED APPROACH: Climb to 2000 direct LEYIC and hold.
--	---

AWOS-3 119.275	TAMPA APP CON 119.65 353.575	CLNC DEL 118.075	UNICOM 122.725 (CTAF) 0
--------------------------	--	----------------------------	--



ELEV 18	D	TDZE 16
----------------	----------	----------------



4 NM Holding Pattern				FOVTA	JIVGA	RWY 13
2000				140°	140°	140°
320°				140°	140°	140°
1600				3.00°	TCH 46	
6.8 NM				4.8 NM		
CATEGORY	A	B	C	D		
LP MDA	460-1	444 (500-1)	460-1½	444 (500-1½)		
LNAV MDA	460-1	444 (500-1)	460-1½	444 (500-1½)		
CIRCLING	500-1	482 (500-1)	700-2 682 (700-2)	920-3 902 (1000-3)		

VENICE, FLORIDA
Amdt 1D 10DEC15

27°04'N-82°26'W

VENICE MUNI (VNC)

RNAV (GPS) RWY 13

SE-3, 03 DEC 2020 to 31 DEC 2020

SE-3, 03 DEC 2020 to 31 DEC 2020