

WAAS CH 69234 W05A	APP CRS 050°	Rwy Idg 5000 TDZE 17 Apt Elev 18
--	------------------------	---

RNAV (GPS) RWY 5

VENICE MUNI (VNC)

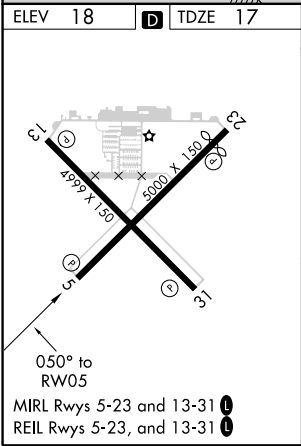
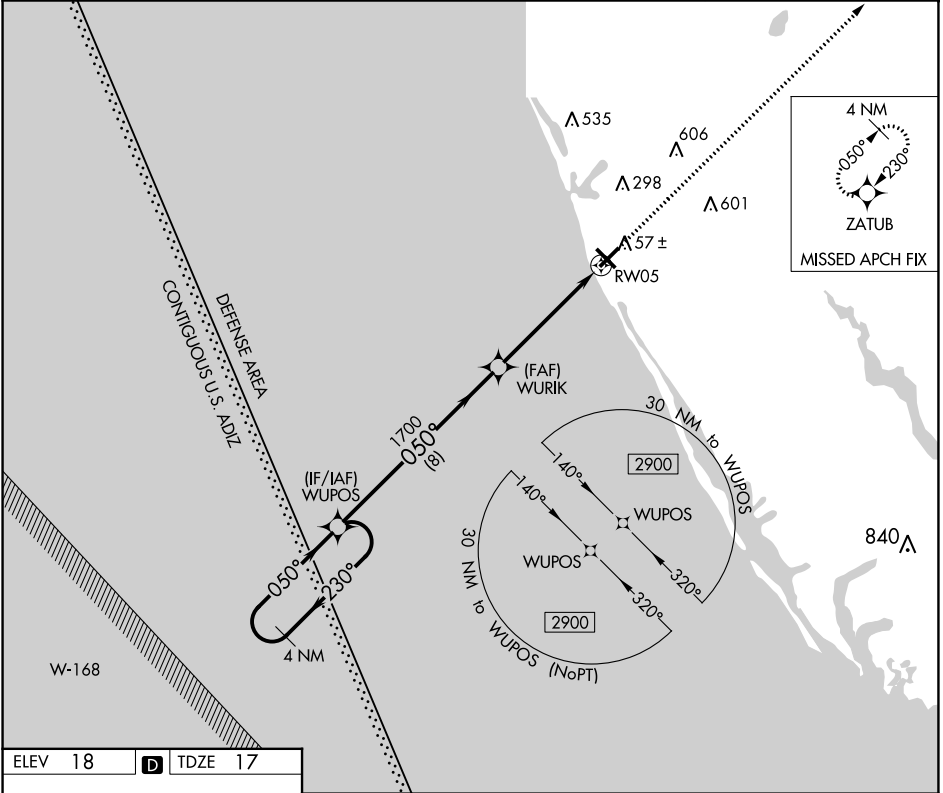
▼

▲

When local altimeter setting not received, use Sarasota altimeter setting and increase all MDA 60 feet, increase LNAV Cat C, D visibility 1/8 mile, and Circling Cat C visibility 1/4 mile. DME/DME RNP-0.3 NA. Helicopter visibility reduction below 3/4 SM NA.

MISSED APPROACH:
Climb to 2900 direct ZATUB and hold.

AWOS-3 119.275	TAMPA APP CON 119.65 353.575	CLNC DEL 118.075	UNICOM 122.725 (CTAF)
--------------------------	--	----------------------------	---------------------------------



4 NM Holding Pattern				2900	ZATUB
CATEGORY	A	B	C	D	
LP MDA	460-1	443 (500-1)	460-1 3/8	443 (500-1 3/8)	
LNAV MDA	480-1	463 (500-1)	480-1 3/8	463 (500-1 3/8)	
CIRCLING	500-1	482 (500-1)	700-2 682 (700-2)	920-3 902 (1000-3)	

SE-3, 03 DEC 2020 to 31 DEC 2020

SE-3, 03 DEC 2020 to 31 DEC 2020