

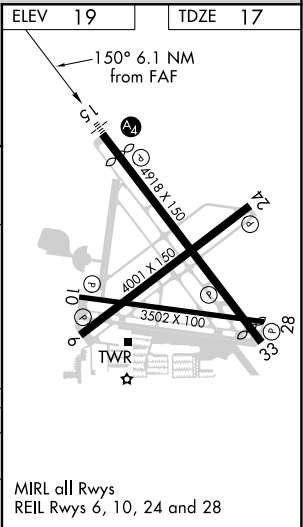
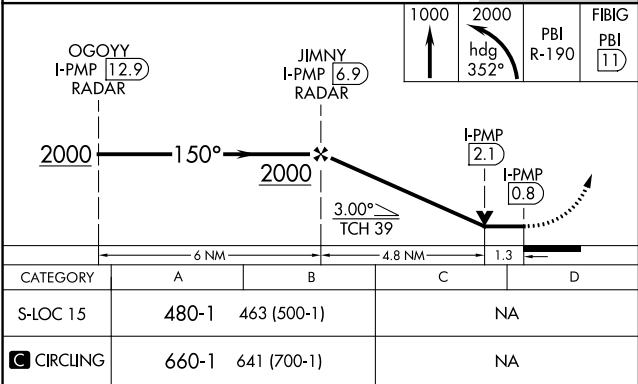
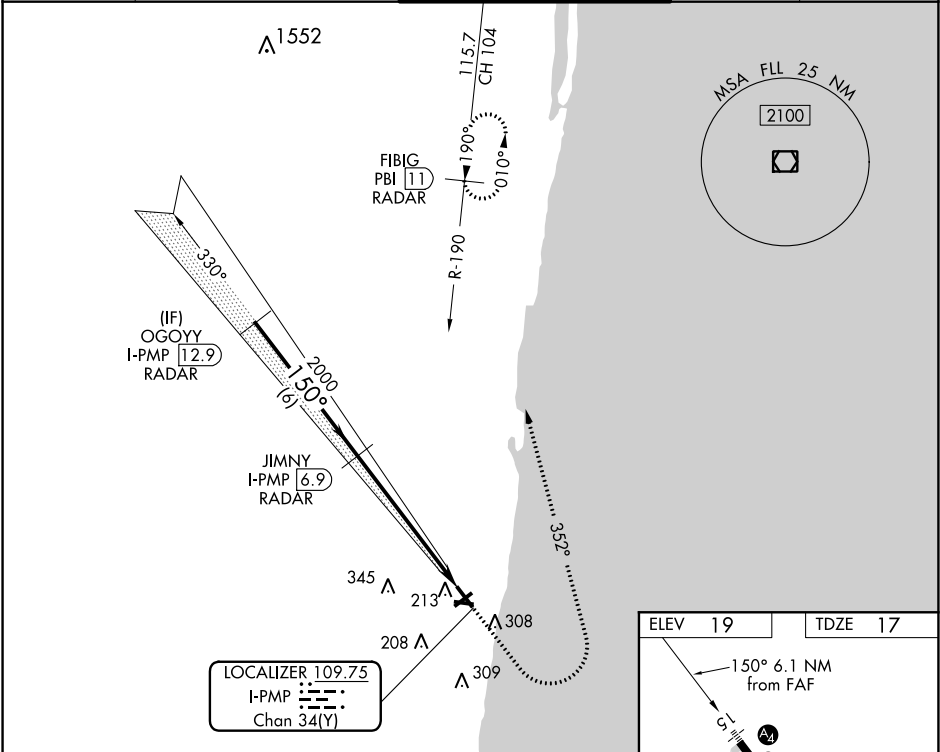
LOC/DME I-PMP	APP CRS	Rwy ldg	4418
109.75	150°	TDZE	17
Chan 34(Y)		Apt Elev	19

LOC RWY 15

POMPANO BEACH AIRPARK (PMP)

DME required. RADAR required for procedure entry.	MALS	MISSED APPROACH: Climb to 1000 then climbing left turn to 2000 on heading 352° and PBI VORTAC R-190 to FIBIG/PBI 11 DME/RADAR and hold.
<div><div></div><div>Rwy 15 helicopter visibility reduction below 1 SM NA. Inop table does not apply. Straight-in Rwy 15 NA at night, Circling Rwy 15 NA at night.</div></div>	<div><div></div><div></div></div>	

ATIS 120.55	MIAMI APP CON 119.7 306.3	POMPANO BEACH TOWER ★ 125.4 (CTAF) 0	GND CON 121.9	UNICOM 122.95
-----------------------	-------------------------------------	--	-------------------------	-------------------------



SE-3, 03 DEC 2020 to 31 DEC 2020

SE-3, 03 DEC 2020 to 31 DEC 2020