

WAAS CH 49019 W18A	APP CRS 184°	Rwy Idg 5013 TDZE 44 Apt Elev 44
--	------------------------	---

RNAV (GPS) RWY 18

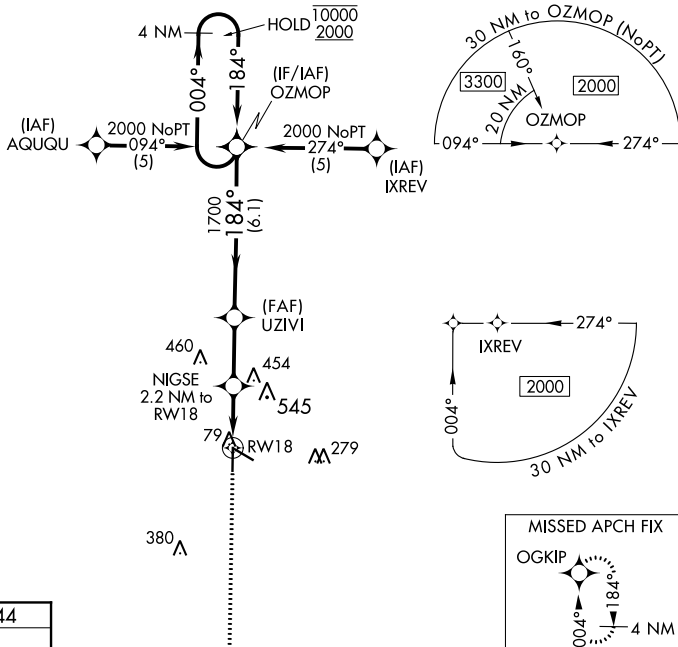
PERRY-FOLEY (FPY)

RNP APCH.

- T** Circling to Rwy 36, 12 NA at night.
A Rwy 18 helicopter visibility reduction below $\frac{3}{4}$ SM NA.
For uncompensated Baro-VNAV systems, LNAV/VNAV NA below -15°C or above 54°C.

MISSED APPROACH: Climb to 2000 direct OGKIP and hold.

AWOS-3PT 118.375	JACKSONVILLE CENTER 127.8 352.0	UNICOM 122.8 (CTAF) 0
----------------------------	---	---------------------------------



ELEV 44		TDZE 44
---------	--	---------

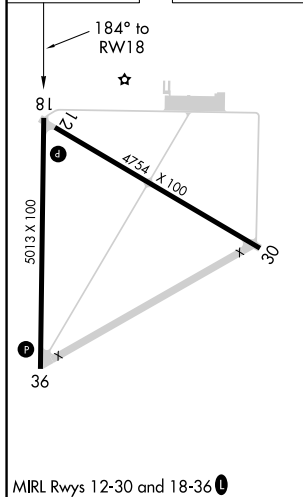


Diagram illustrating the VGS1 and RNAV glidepath for RW18. The glidepath is 1700 feet. The diagram shows the VGS1 and RNAV glidepath not coincident (VGS1 Angle 4.00/TCH 35). The holding pattern is 4 NM. The diagram also shows the VGS1 and RNAV glidepath not coincident (VGS1 Angle 4.00/TCH 35).

RNAV (GPS) RWY 18