

APP CRS 210°	Rwy Idg TDZE Apt Elev	5014 69 76
------------------------	-----------------------------	---------------------------------------

RNAV (GPS) RWY 21

BROOKSVILLE-TAMPA BAY RGNL (BKV)

RNP APCH.

T When local altimeter setting not received, use Tampa Intl altimeter setting and increase all MDA 80 feet and increase LNAV Cat C and Circling Cats C and D visibility $\frac{1}{4}$ mile.

MISSED APPROACH: Climb to 2000 direct MUCRO and hold.

ASOS 134.725	TAMPA APP CON 125.3 316.05	BROOKSVILLE TOWER ★ 118.55 (CTAF) 0	GND CON 121.4	CLNC DEL 119.125	UNICOM 123.0
-----------------	-------------------------------	--	------------------	---------------------	-----------------

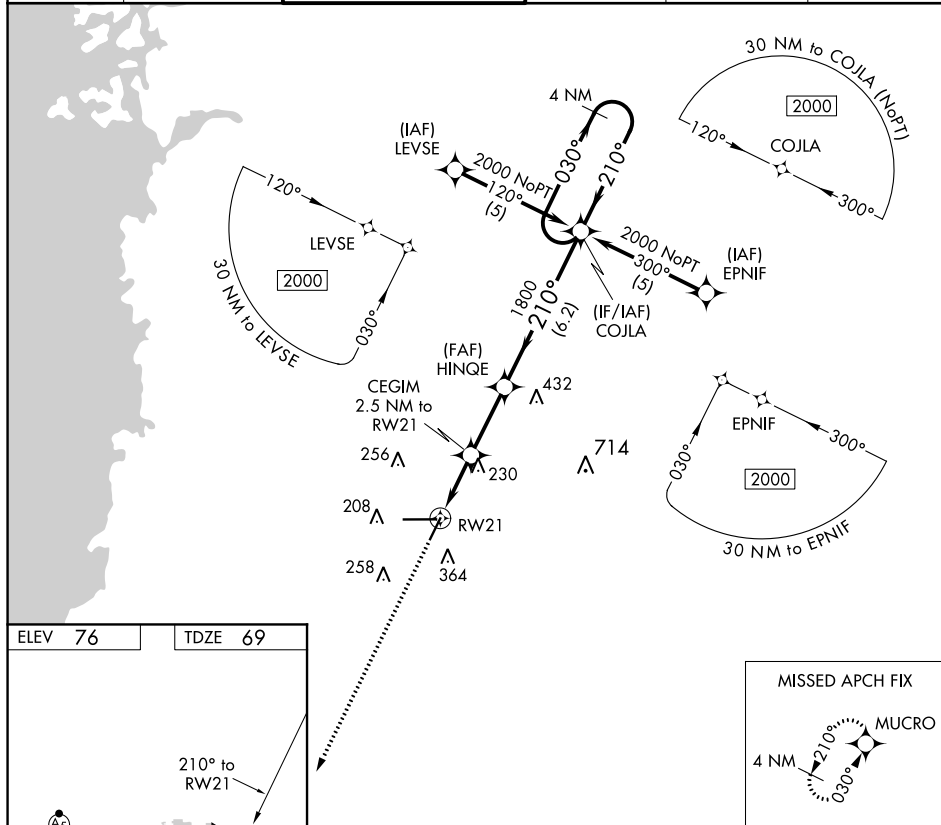


Figure 1-1 illustrates a 4 NM Holding Pattern. The diagram shows a holding pattern with a 4 NM radius. Key points include RW21, CEGIM (2.5 NM to RW21), HINQE, and COJLA. The pattern is defined by a 210° heading and a 3.05° angle. The holding pattern is 4 NM. The diagram also shows the MUCRO and VGSI angles, and the holding pattern is defined by a 210° heading and a 3.05° angle. The holding pattern is 4 NM.

CATEGORY	A	B	C	D
LNAV MDA	500-1	431 (500-1)	500-1¼ 431 (500-1¼)	500-1½ 431 (500-1½)