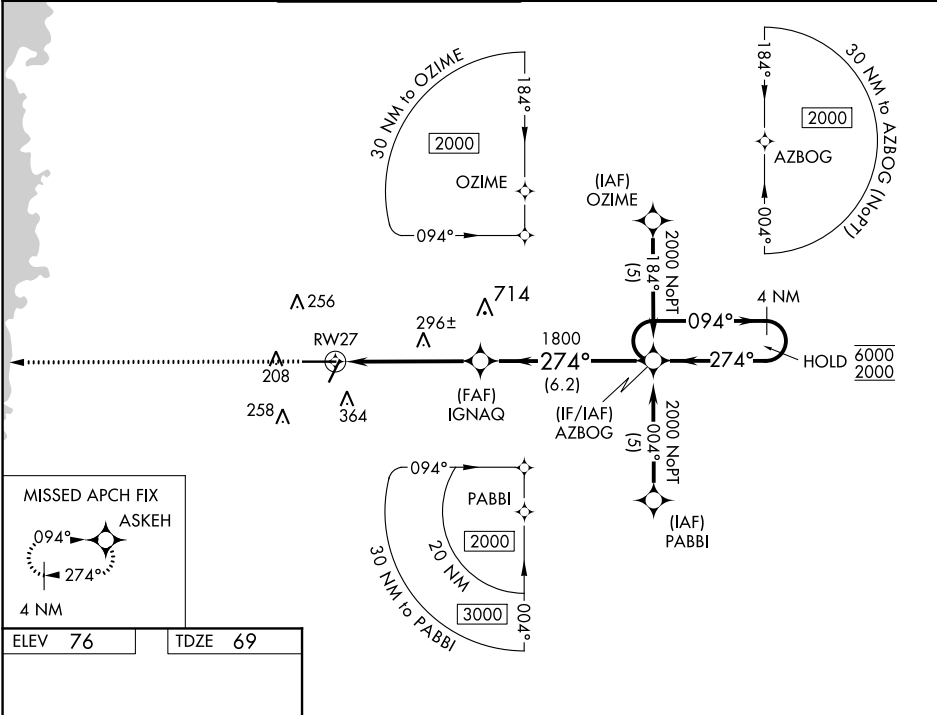


WAAS CH 86408 W27A	APP CRS 274°	Rwy ldg TDZE 69 Apt Elev 76
----------------------------------------	------------------------	-------------------------------------------------

RNAV (GPS) RWY 27
BROOKSVILLE-TAMPA BAY RGNL (BKV)

RNP APCH.		MISSED APPROACH: Climb to 2000 direct ASKEH and hold.			
ASOS 134.725		TAMPA APP CON 125.3 316.05		BROOKSVILLE TOWER ★ 118.55 (CTAF) 0	
GND CON 121.4		CLNC DEL 119.125		UNICOM 123.0	



ELEV 76		TDZE 69	
MIRL Rwy 3-21 and 9-27 0		274° to RWY 27	
2000 ASKEH		VGSI and RNAV glidepath not coincident (VGSI Angle 3.00/TCH 57).	
* LNAV only.		4 NM Holding Pattern	
RWY 27		IGNAQ 1800	
1.4 NM		3.8 NM	
1.4 NM		6.2 NM	
CATEGORY	A	B	C
LPV DA	442-1¼	373 (400-1¼)	
LNAV/VNAV DA	595-1¾	526 (600-1¾)	
LNAV MDA	620-1	551 (600-1)	620-1½ 551 (600-1½)
			620-1¾ 551 (600-1¾)

SE-3, 03 DEC 2020 to 31 DEC 2020

SE-3, 03 DEC 2020 to 31 DEC 2020