

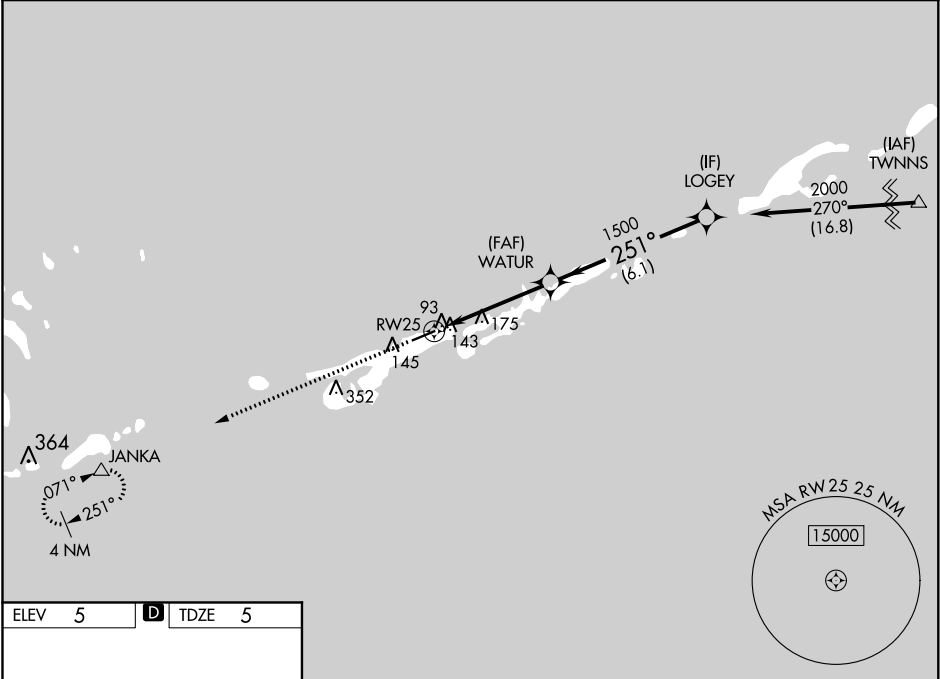
WAAS CH 58312 W25A	APP CRS 251°	Rwy Idg TDZE Apt Elev	5008 5 5
--	------------------------	-----------------------------	-------------------------------------

RNAV (GPS) RWY 25
THE FLORIDA KEYS MARATHON INTL (MTH)

▼ DME/DME RNP-0.3 NA. Helicopter visibility reduction below ¾ SM NA. When local altimeter setting not received, use Key West Intl altimeter setting and increase all DA 93 feet and MDA 100 feet, and increase LPV all Cats visibility ½ mile; LNAV/VNAV all Cats visibility ¼ mile; LNAV Cats C and D visibility ¼ mile and increase Circling Cat D visibility ¼ mile. Baro-VNAV NA below -15°C (5°F) and above 48°C (118°F). Baro-VNAV NA when using Key West Intl altimeter setting.

▲ MISSED APPROACH: Climb to 3100 direct JANKA and hold.

ASOS 135,525	MIAMI CENTER 133.5 306.9	UNICOM 122.975 (CTAF) 0
------------------------	------------------------------------	-----------------------------------



ELEV **5** **D** TDZE **5**

3100 JANKA

251° to RW25

5008 x 100

62

REIL Rwy 7 **0**

MIRL Rwy 7-25 **0**

3100 ↑	JANKA △	VGSI and RNAV glidepath not coincident (VGSI Angle 3.00/TCH 24).			Procedure Turn NA
		RW25	WATUR	LOGEY	
CATEGORY		A	B	C	D
LPV DA		315-1 310 (400-1)			
LNAV/ VNAV DA		404-1½ 399 (400-1½)			
LNAV MDA		440-1	435 (500-1)	440-1¼ 435 (500-1¼)	440-1½ 435 (500-1½)
CIRCLING		460-1	455 (500-1)	460-1½ 455 (500-1½)	580-2 575 (600-2)

SE-3, 03 DEC 2020 to 31 DEC 2020

SE-3, 03 DEC 2020 to 31 DEC 2020