

WAAS CH <b>50318</b> <b>W13A</b>	APP CRS <b>131°</b>	Rwy Idg TDZE <b>14</b> Apt Elev <b>16</b>	<b>5152</b>
--	------------------------	---	-------------

RNAV (GPS) RWY 13

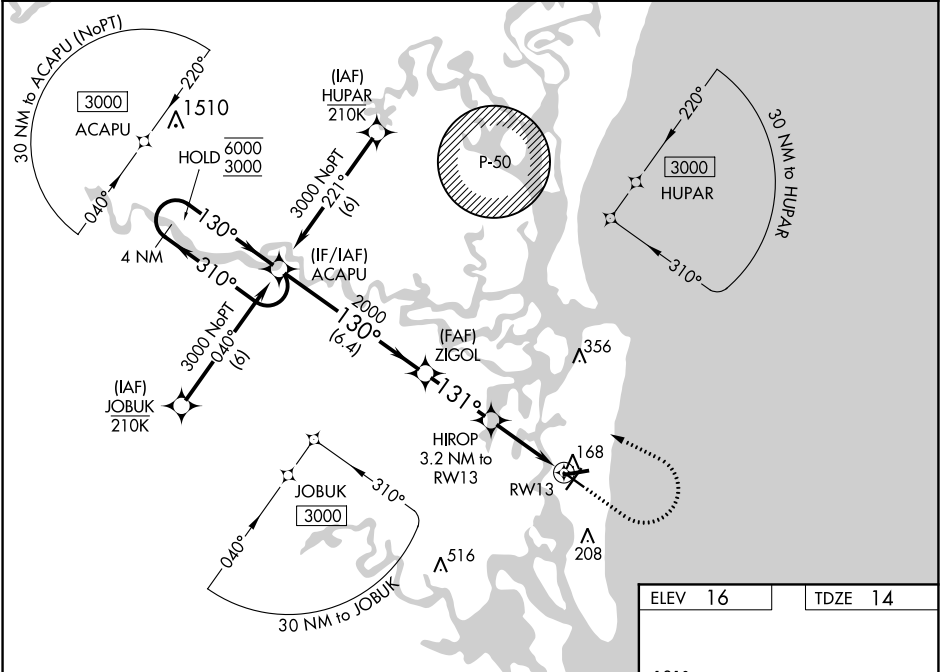
FERNANDINA BEACH MUNI (FHB)

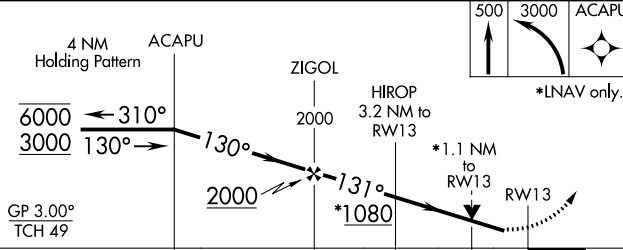
RNP APCH.

Circling Rwy 9, 22, 27 NA at night. Rwy 13 helicopter visibility reduction below ¾ SM NA. For uncompensated Baro-VNAV systems, LNAV/VNAV NA below -15°C or above 54°C.

MISSED APPROACH: Climb to 500 then climbing left turn to 3000 direct ACAPU and hold, continue climb-in-hold to 3000.

AWOS-3 <b>118.075</b>	JACKSONVILLE APP CON <b>127.0 292.15</b>	UNICOM <b>122.7 (CTAF) 0</b>
--------------------------	---	---------------------------------



 <p>4 NM Holding Pattern</p> <p>ACAPU</p> <p>ZIGOL</p> <p>HIROP 3.2 NM to RW13</p> <p>6000 ← 310°</p> <p>3000 → 130°</p> <p>GP 3.00° TCH 49</p> <p>2000</p> <p>2000</p> <p>*1080</p> <p>*1.1 NM to RW13</p> <p>RW13</p> <p>6.4 NM</p> <p>2.9 NM</p> <p>2.1 NM</p> <p>1.1</p> <p>500</p> <p>3000</p> <p>ACAPU</p> <p>*LNAV only.</p>				
CATEGORY	A	B	C	D
LPV DA	288-1		274 (300-1)	
LNAV/VNAV DA	443-1 <sup>3</sup> / <sub>8</sub>		429 (500-1 <sup>1</sup> / <sub>2</sub> )	
LNAV MDA	420-1	406 (500-1)	420-1 <sup>1</sup> / <sub>8</sub>	406 (500-1 <sup>1</sup> / <sub>2</sub> )
CIRCLING	480-1	464 (500-1)	580-1 <sup>1</sup> / <sub>2</sub> 564 (600-1 <sup>1</sup> / <sub>2</sub> )	580-2 564 (600-2)

ELEV 16 TDZE 14

131° to RW13

\*LNAV only.

5000 X 100

5152 X 100

5301 X 100

31

REIL Rwy 4 and 13 0

MIRL Rwy 4-22, 9-27 and 13-31 0