

APP CRS
349°

Rwy Idg
TDZE
10

15001
Apt Elev
10

RNAV (GPS) RWY 33

NASA SHUTTLE LANDING FACILITY (TTS)

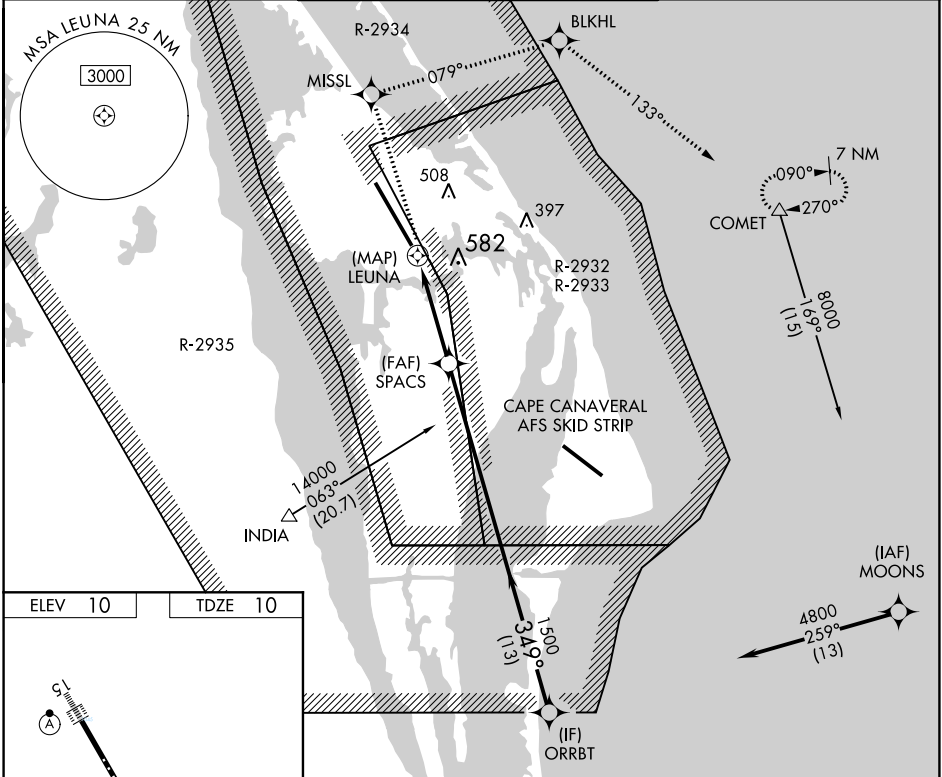
⚠ Inop table does not apply to LNAV Cats A/B. For inop ALSF, increase LNAV Cat E visibility to 1¼ mile. DME/DME RNP-0.3 NA. Visibility reduction by helicopters NA.

⚠ When local altimeter setting not received, use Melbourne altimeter setting and increase all MDA 80 feet; increase LNAV Cats C and D, and Circling Cat C visibility ¼ mile, increase LNAV Cat E visibility ½ mile. VDP NA when using Melbourne altimeter setting. For inop ALSF when using Melbourne altimeter setting, increase LNAV Cat E visibility to 1¾.

ALSF-2

MISSED APPROACH: Climb to 8000 direct MISSL and right turn on track 079° to BLKHL and on track 133° to COMET and hold, continue climb-in-hold to 8000.

ORLANDO APP CON 134.95 281.425	NASA TOWER ★ 128.55 (CTAF) 284.0	GND CON 121.75
------------------------------------------	--------------------------------------------	--------------------------



ELEV 10

TDZE 10

8000	MISSL	BLKHL	COMET	ORRBT
↑		tr 079°		

1.5 NM to RW33

3.01° TCH 55

349°

1500

4800

Procedure Turn NA

0.5

1 NM

3 NM

13 NM

CATEGORY	A	B	C	D	E
LNAV MDA	540-1	530 (600-1)	540-1½	540-1¼	530 (600-1¼)
CIRCLING	540-1	530 (600-1)	540-1½ 530 (600-1½)	940-3	930 (1000-3)

SE-3, 03 DEC 2020 to 31 DEC 2020

SE-3, 03 DEC 2020 to 31 DEC 2020