

RNAV (GPS) RWY 27

MISSED APPROACH: Climb to 700 then climbing right turn to 3000 direct OJOFY and hold.

UNICOM
122.725 (CTAF) **L**

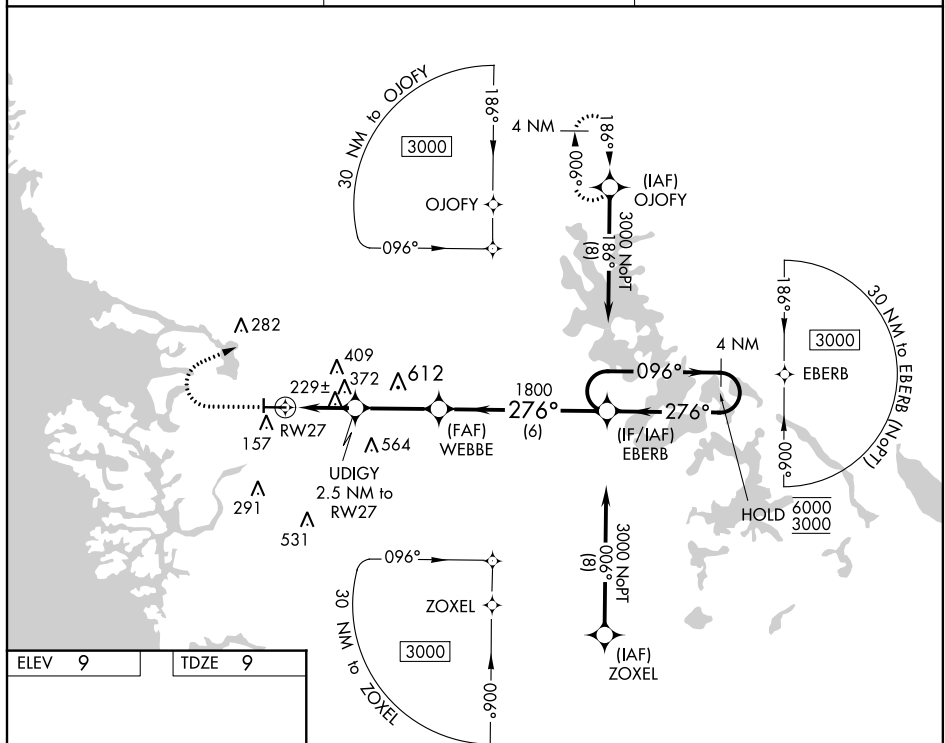


Diagram illustrating the RWY 27 approach procedure. The diagram shows a 4 NM Holding Pattern at 3000 ft. The approach path starts at 276° to RWY 27, with a 27° turn. Key points include UDIGY (2.5 NM to RWY 27), WEBBE (1800 ft), and EBERB. The final approach is at 096° to RWY 27, with a 276° turn. The diagram also shows the MRL Rwy 9-27 and REIL Rwy 9 and 27.

SE-3, 03 DEC 2020 to 31 DEC 2020

SE-3, 03 DEC 2020 to 31 DEC 2020