

WAAS CH 78100 W23A	APP CRS 226°	Rwy Idg 4200 TDZE 21 Apt Elev 22
--	------------------------	---

RNAV (GPS) RWY 23
TAMPA EXECUTIVE (VDF')

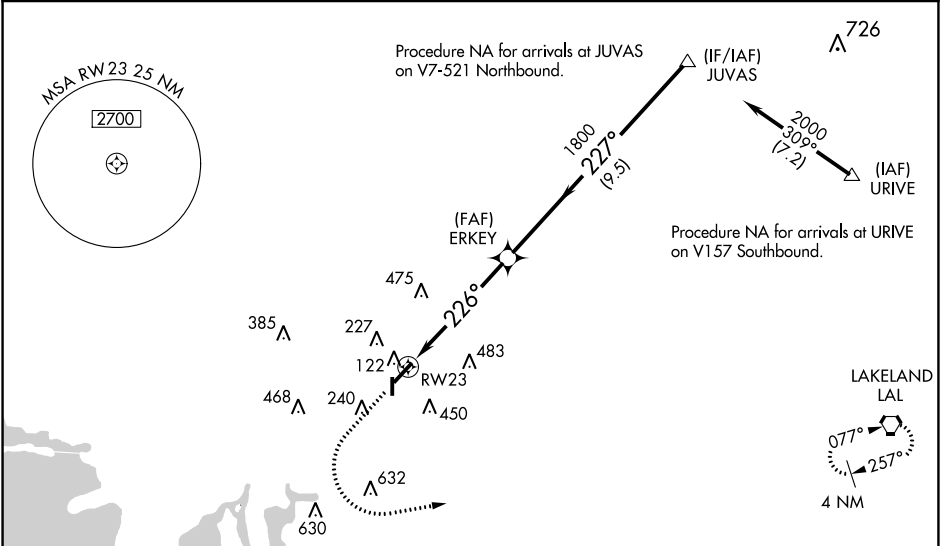
RNP APCH.

⚠ Inop table does not apply to LPV and LNAV Cat A/B. Baro-VNAV NA when using Tampa Intl altimeter setting. For uncompensated Baro-VNAV systems, LNAV/VNAV NA below -15°C (5°F) or above 54°C (130°F). Rwy 23 helicopter visibility reduction below 3/4 SM NA. When local altimeter setting not received, use Tampa Intl altimeter setting and increase LPV DA to 323 feet, LNAV/VNAV DA to 513; increase all MDAs 40 feet, and LNAV and Circling Cat C visibilities 1/4 SM. Circling Rwy 18, 36 NA at night.

MALSR

MISSED APPROACH:
Climb to 800 then climbing left turn to 2700 direct to LAL VORTAC and hold.

AWOS-3 121.125	TAMPA APP CON 119.9 290.3	UNICOM 122.7 (CTAF) 0
--------------------------	-------------------------------------	---------------------------------



ELEV 22 TDZE 21

226° to RW23

REIL Rwys 5, 18, and 36 1

MRL Rwys 5-23 and 18-36 0

800

↑

2700

↖

LAL

ERKEY

1800

JUVAS

Procedure Turn NA

RW23

226°

227°

1800

GP 3.10°

TCH 40

5.3 NM

9.5 NM

CATEGORY	A	B	C	D
LPV DA	298-1	277 (300-1)		NA
LNAV/ VNAV	488-1½	467 (500-1½)		NA
LNAV MDA	560-1	539 (600-1)		NA
CIRCLING	560-1 538 (600-1)	760-1 738 (800-1)	760-2 738 (800-2)	NA

SE-3, 03 DEC 2020 to 31 DEC 2020

SE-3, 03 DEC 2020 to 31 DEC 2020