

APP CRS

Rwy Idg

3405

TDZE

47

Apt Elev

49

090°

RNAV (GPS) RWY 9

ANTONIO RIVERA RODRIGUEZ (VQS)(TJVQ)

▼

NA

Use Luis Munoz Marin Intl altimeter setting.  
DME/DME RNP-0.3 NA.  
Circling NA south of Rwy 9-27.

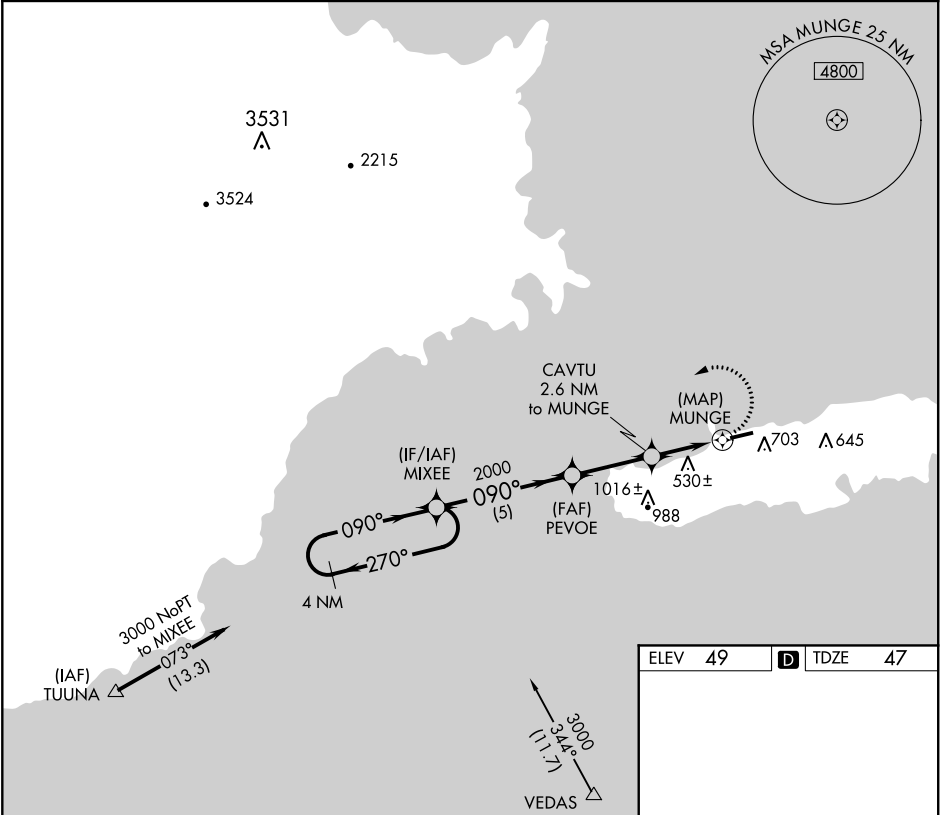
MISSED APPROACH: Climbing left turn to 3000  
direct MIXEE and hold.

SAN JUAN CERAP APP CON

128.65 279.6

UNICOM

123.0 (CTAF)



4 NM Holding Pattern

MIXEE

PEVOE

CAVTU 2.6 NM to MUNGE

3.23° TCH 30

MUNGE

3000

2000

1140

5 NM

2.9 NM

2.6 NM

0.5

VGSi and descent angles not coincident.  
(VGSi Angle 3.00/TCH 46).

3000

270°

090°

090°

090°

ELEV 49

TDZE 47

3000

MIXEE

0.5% UP

4301 X 75

CATEGORY	A	B	C	D
LNVA MDA	880-1 833 (900-1)	880-1¼ 833 (900-1¼)	NA	NA
CIRCLING	1140-1¼ 1091 (1100-1¼)	1140-1½ 1091 (1100-1½)	NA	NA

MIRL Rwy 9-27