

WAAS CH <b>58117</b> <b>W23A</b>	APP CRS <b>231°</b>	Rwy Idg <b>5000</b> TDZE <b>33</b> Apt Elev <b>33</b>
--	------------------------	---

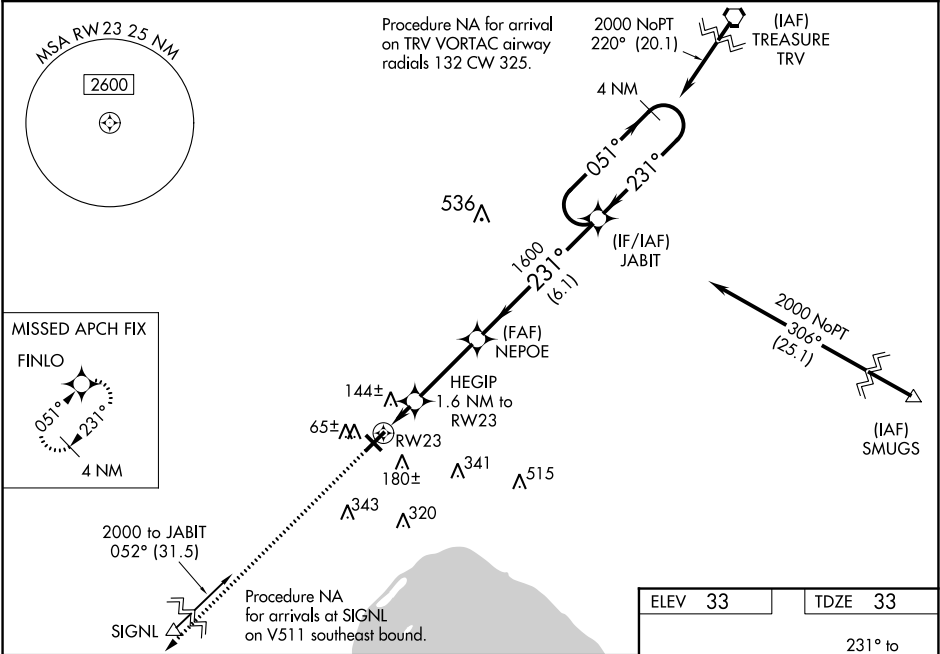
RNAV (GPS) RWY 23

OKEECHOBEE COUNTY (OBE)

**⚠** Baro-VNAV NA when using Vero Beach altimeter setting. For uncompensated Baro-VNAV systems, LNAV/VNAV NA below -2°C (29°F) or above 43°C (109°F). DME/DME RNP-0.3 NA. Helicopter visibility reduction below 1 SM NA. When local altimeter setting not received, use Vero Beach altimeter setting and increase all DA 77 feet and all MDA 80 feet, increase LPV all Cats visibility 1/8 mile, and increase LNAV/VNAV all Cats and LNAV Cats C and D visibility 3/8 mile. Procedure NA at night.

**MISSED APPROACH:**  
Climb to 2000 direct FINLO and hold.

AWOS-3 <b>118.675</b>	MIAMI CENTER <b>132.25 370.9</b>	UNICOM <b>123.0 (CTAF)</b>
--------------------------	-------------------------------------	-------------------------------



2000 FINLO	VGSI and RNAV glidepath not coincident (VGSI Angle 3.00/TCH 40).				4 NM Holding Pattern
*LNAV only.	HEGIP 1.6 NM to RW23				
	RW23	*600	1600	231°	051° → 2000
	1.6 NM	3.1 NM	6.1 NM		GP 3.00° TCH 58
CATEGORY	A	B	C	D	
LPV DA	315-1 282 (300-1)				
LNAV/VNAV DA	435-1¼ 402 (500-1¼)				
LNAV MDA	400-1 367 (400-1)				
CIRCLING	500-1 467 (500-1)	500-1½ 467 (500-1½)	600-2 567 (600-2)		

