

WAAS CH <b>93916</b> <b>W32A</b>	APP CRS <b>321°</b>	Rwy Idg <b>4001</b> TDZE <b>33</b> Apt Elev <b>33</b>
--	------------------------	---

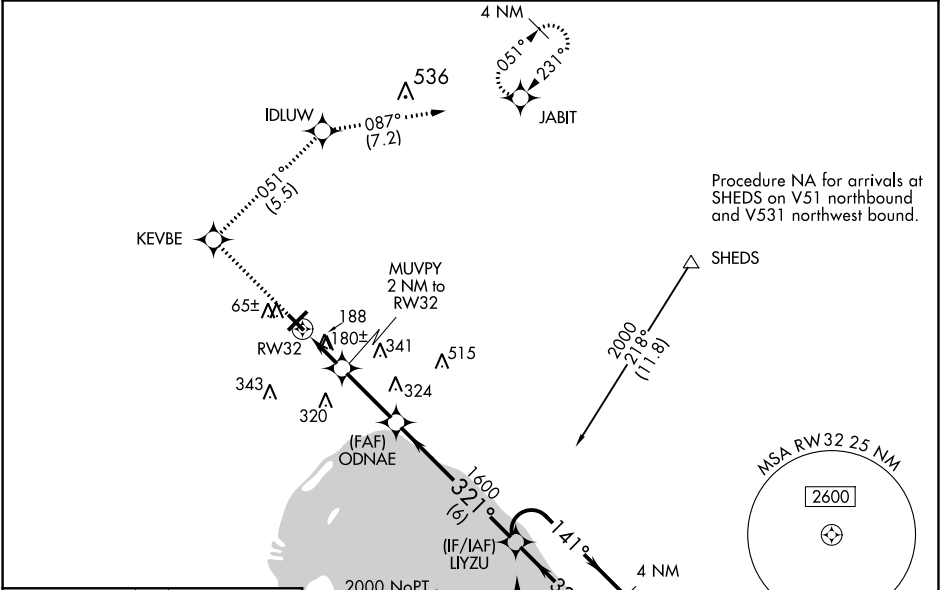
RNAV (GPS) RWY 32

OKEECHOBEE COUNTY (OBE)

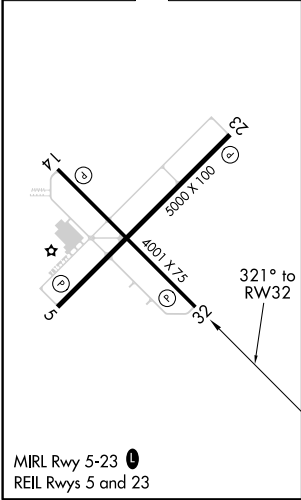
**A** Baro-VNAV NA when using Vero Beach altimeter setting. For uncompensated Baro-VNAV systems, LNAV/VNAV NA below -15°C (5°F) or above 48°C (118°F). Helicopter visibility reduction below 1 SM NA. DME/DME RNP-0.3 NA. Procedure NA at night. When local altimeter setting not received, use Vero Beach altimeter setting and increase all DA 77 feet and all MDA 80 feet; increase LPV all Cats, LNAV/VNAV all Cats, and LNAV Cat D visibility ¼ mile.

MISSED APPROACH: Climb to 2000 direct KEVBE and right turn on track 051° to IDLUW and on track 087° to JABIT and hold.

AWOS-3 <b>118.675</b>	MIAMI CENTER <b>132.25 370.9</b>	UNICOM <b>123.0 (CTAF) 0</b>
--------------------------	-------------------------------------	---------------------------------



ELEV <b>33</b>	TDZE <b>33</b>
----------------	----------------



2000 KEVBE	tr 051°	IDLUW	tr 087°	JABIT	4 NM Holding Pattern
*LNAV only.		MUVPY 2 NM to RW32	ODNAE	LIYZU	
RW32		*700	1600	1600	GP 3.00° TCH 40
2 NM		2.7 NM	6 NM		
CATEGORY	A	B	C	D	
LPV DA	283-1 250 (300-1)				
LNAV/VNAV DA	498-1¾ 465 (500-1¾)				
LNAV MDA	440-1 407 (500-1)		440-1¼ 407 (500-1¼)		
CIRCLING	500-1 467 (500-1)		500-1½ 467 (500-1½)		600-2 567 (600-2)

SE-3, 03 DEC 2020 to 31 DEC 2020

SE-3, 03 DEC 2020 to 31 DEC 2020