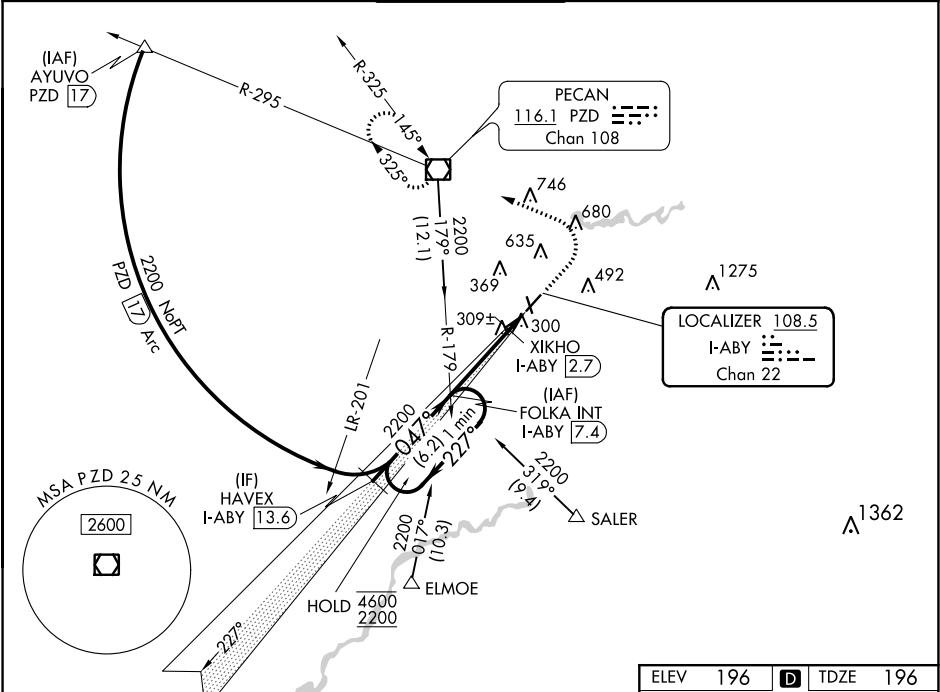


LOC/DME I-ABY <b>108.5</b> Chan <b>22</b>	APP CRS <b>047°</b>	Rwy Idg TDZE <b>196</b> Apt Elev <b>196</b>	<b>6601</b>
---	------------------------	---	-------------

ILS or LOC RWY 5  
SOUTHWEST GEORGIA RGNL (ABY)

From ELMOE and SALER: RNAV-1 GPS required.		MALSR	MISSED APPROACH: Climb to 1000 then climbing left turn to 3000 direct PZD VOR/DME and hold.	
For inop ALS, increase S-LOC 5 Cats C/D visibility to 1½ SM and XIKHO fix minimums S-LOC 5 Cats C/D visibility to RVR 5500.		AS		
ATIS <b>133.05</b>	JACKSONVILLE CENTER <b>125.75 226.8</b>	ALBANY TOWER * <b>120.25 (CTAF) 0336.4</b>	GND CON <b>121.9 348.6</b>	UNICOM <b>122.95</b>



VGSI and ILS glidepath not coincident (VGSI Angle 3.00/TCH 55).		1000	3000	PZD
One Minute Holding Pattern		*LOC only.		
FOLKA INT I-ABY 7.4				
4600 ← 227°				
2200 → 047°				
GS 3.00° TCH 60				
2200				
4.7 NM				
1.4 NM				
CATEGORY	A	B	C	D
S-ILS 5	396/24 200 (200-½)			
S-LOC 5	680/24	484 (500-½)	680/50	484 (500-1)
CIRCLING	680-1	484 (500-1)	940-2¼ 744 (800-2¼)	940-2½ 744 (800-2½)
XIKHO FIX MINIMUMS (DME REQUIRED)				
S-LOC 5	560/24	364 (400-½)	560/35	364 (400-¾)
CIRCLING	640-1 444 (500-1)	660-1 464 (500-1)	940-2¼ 744 (800-2¼)	940-2½ 744 (800-2½)
TWR 263 529.148 6601 X 148 252 35				
047° 6.1 NM from FAF				
HIRL Rwy 5-23 1 MIRL Rwy 17-35 1 REIL Rws 17 and 23				
FAF to MAP 6.1 NM				
Knots 60 90 120 150 180				
Min:Sec 6:06 4:04 3:03 2:26 2:02				