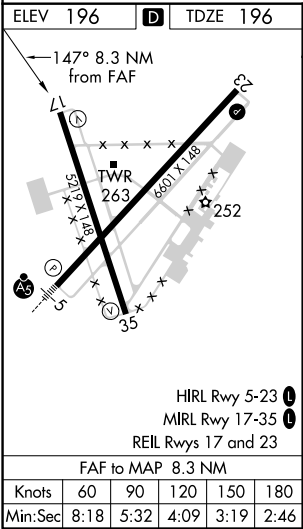
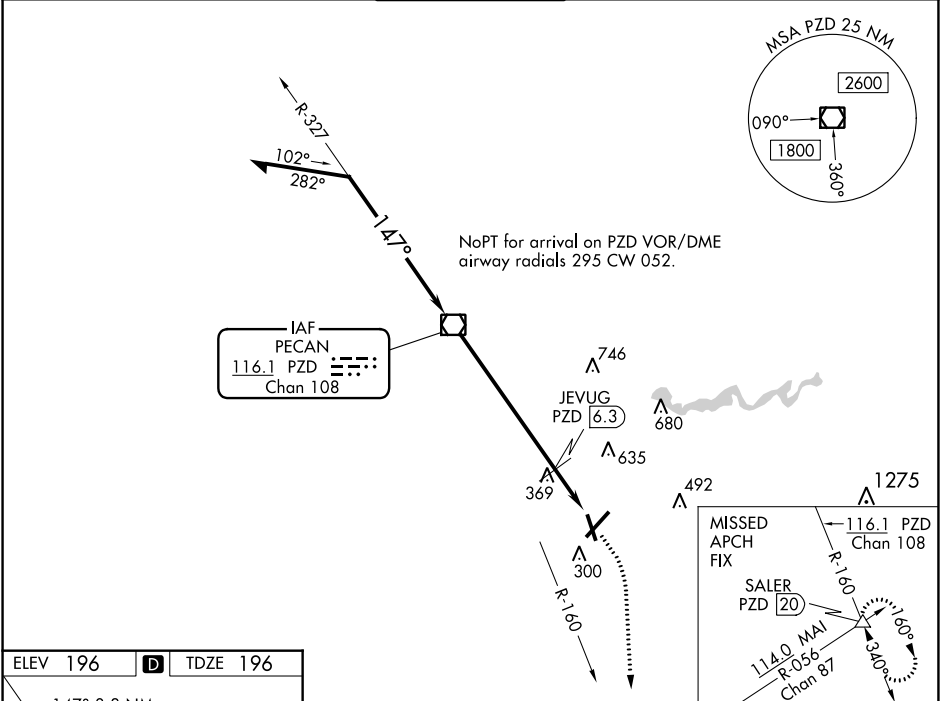


VOR/DME PZD	APP CRS	Rwy Idg	5219
<b>116.1</b>	<b>147°</b>	TDZE	<b>196</b>
Chan <b>108</b>		Apt Elev	<b>196</b>

VOR RWY 17  
SOUTHWEST GEORGIA RGNL (ABY)

<b>V</b> <b>A</b>	Rwy 17 helicopter visibility reduction below ¾ SM NA.		MISSED APPROACH: Climb to 1000 then climbing right turn to 3000 on heading 170° and PZD VOR/DME R-160 to SALER INT/20 DME and hold.	
ATIS	JACKSONVILLE CENTER	ALBANY TOWER ★	GND CON	UNICOM
<b>133.05</b>	<b>125.75 226.8</b>	<b>120.25(CTAF) 0336.4</b>	<b>121.9 348.6</b>	<b>122.95</b>



VGSI and descent angles not coincident (VGSI Angle 3.00/TCH 52).		PZD VOR/DME	
Remain within 10 NM		1000 3000 PZD R-160 SALER	
2000 327° 147° 2000 740 6.3 NM 2 NM		JEVUG PZD 6.3 PZD 8.3	
CATEGORY	A	B	C D
S-17	740-1	544 (600-1)	740-1½ 544 (600-1½)
CIRCLING	740-1	544 (600-1)	940-2¼ 744 (800-2¼) 940-2½ 744 (800-2½)
JEVUG FIX MINIMUMS			
S-17	640-1	444 (500-1)	640-1¾ 444 (500-1¾)
CIRCLING	640-1 444 (500-1)	660-1 464 (500-1)	940-2¼ 744 (800-2¼) 940-2½ 744 (800-2½)

SE-4, 03 DEC 2020 to 31 DEC 2020

SE-4, 03 DEC 2020 to 31 DEC 2020