

LOC/DME I-PKU 111.75 Chan 54 (Y)	APP CRS 275°	Rwy Idg TDZE 998 Apt Elev 1026	ILS RWY 28 (CAT II) HARTSFIELD-JACKSON ATLANTA INTL (ATL)
--	------------------------	--	---

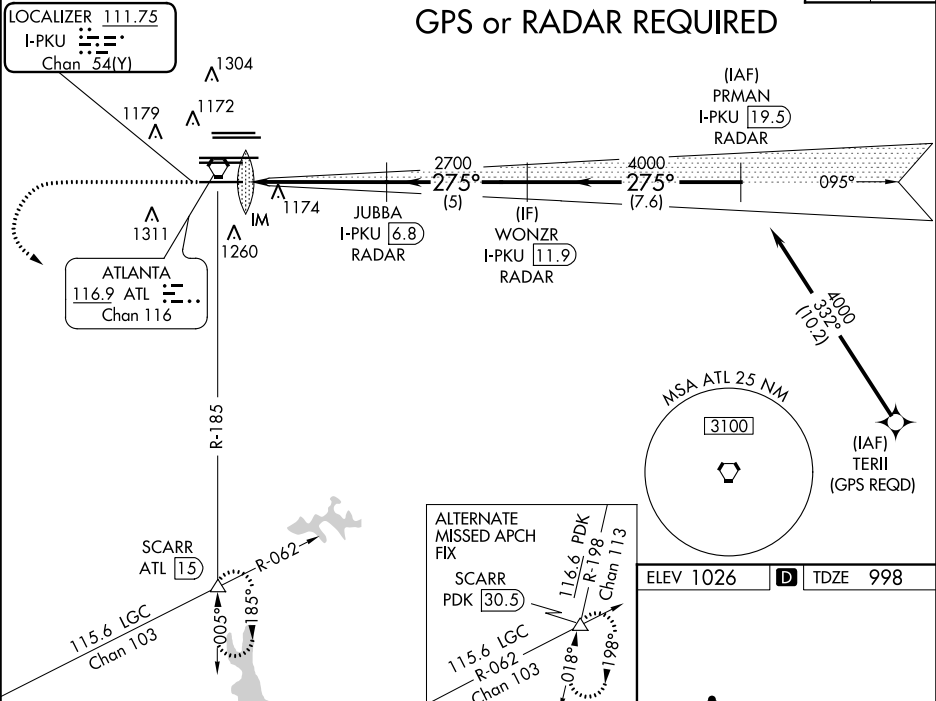
Simultaneous approach authorized with Rwy 26R or 26L or 27R,
or Rwys 26R and 27R.
DME or Radar Required.

ALSIF-2

MISSED APPROACH: Climb to 1400
then climbing left turn to 3000 on
ATL VORTAC R-185 to SCARR INT/
ATL 15 DME and hold.

D-ATIS ARR 119.65 DEP 125.55	ATLANTA APP CON 127.9 379.9	ATLANTA TOWER 8L-26R 8R-26L 9L-27R 9R-27L 10-28 RWYS 119.1 125.325 123.85 119.3 119.5 254.4	ALL RWYS 121.9 121.75 121.65 254.4	GND CON 10-28 RWYS	ALL RWYS
--	--	--	---	-----------------------	-------------

Δ 2049 Δ 2049	CLNC DEL 118.1	CPDLC
--------------------------------	-----------------------------	-------



1400 3000 SCARR
ATL R-185

WONZR I-PKU [11.9] RADAR

PRMAN I-PKU [19.5] RADAR

JUBBA I-PKU [6.8] RADAR

IM

2700 4000 275° 4000

GS 3.00° TCH 57

1100' 5.2 NM 5 NM 7.6 NM

CATEGORY A B C D

S-ILS 28 RA 188/12 100 DA 1098

CATEGORY II ILS - SPECIAL AIRCREW & AIRCRAFT CERTIFICATION REQUIRED

HIRL all Rwys
TDZ/CL Rwys 8L, 9R,
10, 26R, 27L and 28