

LOC/DME I-PKU 111.75 Chan 54 (Y)	APP CRS 275°	Rwy Idg TDZE 998 Apt Elev 1026	ILS RWY 28 (SA CAT I) HARTSFIELD-JACKSON ATLANTA INTL (ATL)
--	------------------------	--	---

Simultaneous approach authorized with Rwy 26R or 26L or 27R, or Rwys 26R and 27R.
DME or Radar Required.
Requires specific OPSPEC, MSPEC or LOA approval and use of HUD to DH.

ALSIF-2

MISSED APPROACH: Climb to 1400 then climbing left turn to 3000 on ATL VORTAC R-185 to SCARR INT/ ATL 15 DME and hold.

D-ATIS ARR 119.65 DEP 125.55	ATLANTA APP CON 127.9 379.9	ATLANTA TOWER 8L-26R 8R-26L 9L-27R 9R-27L 10-28 RWYS 119.1 125.325 123.85 119.3 119.5 254.4	ALL RWYS 121.9 121.75 121.65 254.4	GND CON 10-28 RWYS	ALL RWYS
--	--	--	---	-----------------------	-------------

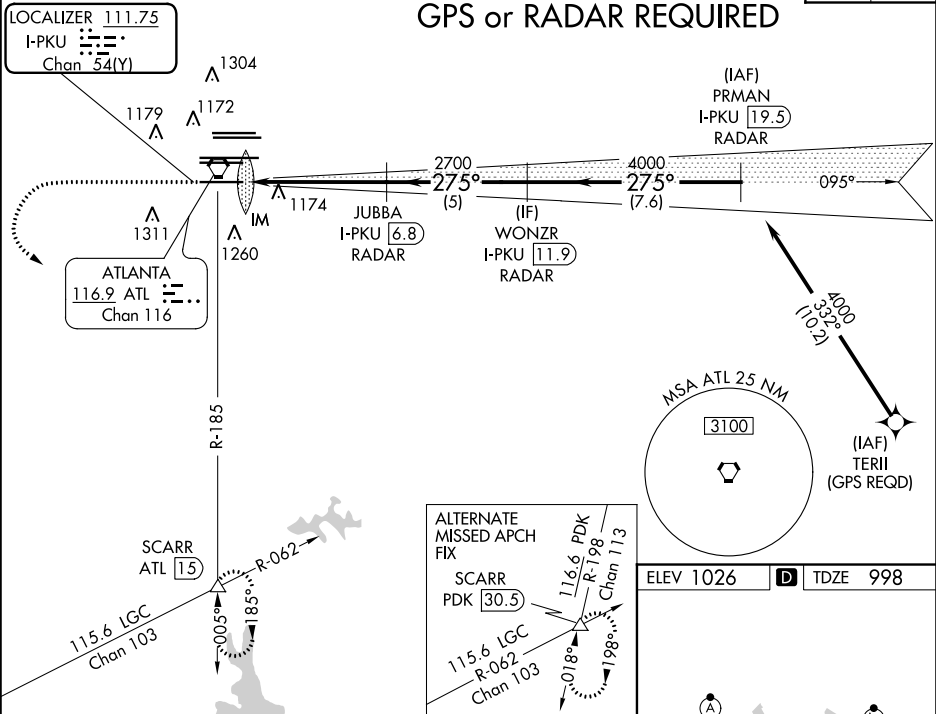
GPS or RADAR REQUIRED

LOCALIZER 111.75
I-PKU
Chan 54(Y)

ATLANTA
116.9 ATL
Chan 116

ATLANTA
118.1

CPDLC



1400
ATL R-185

3000
SCARR

WONZR I-PKU [11.9] RADAR

PRMAN I-PKU [19.5] RADAR

JUBBA I-PKU [6.8] RADAR

IM

2700

4000

275°

4000

GS 3.00°
TCH 57

1100'

5.2 NM

5 NM

7.6 NM

CATEGORY	A	B	C	D
S-ILS 28	RA 264/14 150 DA 1148			

SA CATEGORY I ILS - SPECIAL AIRCREW & AIRCRAFT CERTIFICATION REQUIRED

HIREL all Rwy's
TDZ/CL Rwy's 8L, 9R, 10, 26R, 27L and 28