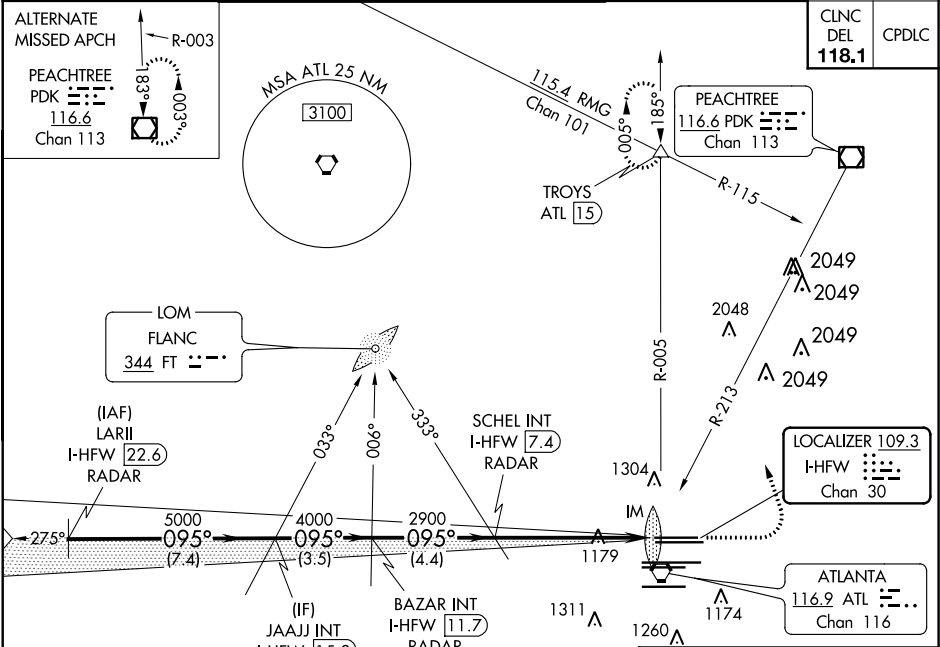


LOC/DME I-HFW 109.3 Chan 30	APP CRS 095°	Rwy Idg 8800 TDZE 1015 Apt Elev 1026
---	------------------------	---

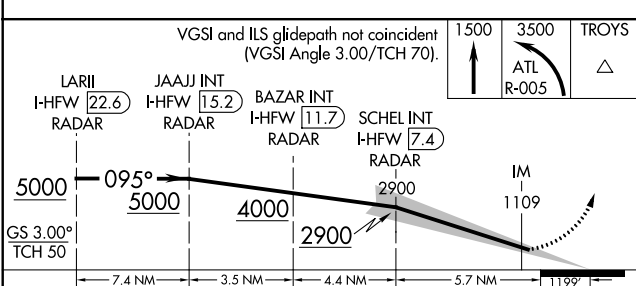
ILS RWY 8L (CAT II & III)
HARTSFIELD-JACKSON ATLANTA INTL (ATL)

Simultaneous approach authorized with Rwy 9L or 9R or 10, or Rwy 9L and 10. ADF or DME or RADAR required.	ALSIF-2 	MISSED APPROACH: Climb to 1500 then climbing left turn to 3500 on ATL VORTAC R-005 to TROYS INT/ATL 1.5 DME and hold.
--	-------------	---

D-ATIS ARR 119.65 DEP 125.55	ATLANTA APP CON 127.9 379.9	ATLANTA TOWER 8L-26R 119.1 26L 125.325 9L-27R 123.85 9R-27L 119.3 10-28 119.5 254.4	ALL RWYS 254.4	GND CON (8L-26R, 8R-26L) (9L-27R, 9R-27L) 10-28 121.9 121.75 121.65 254.4	ALL RWYS
--	--	---	-----------------------------	---	-------------

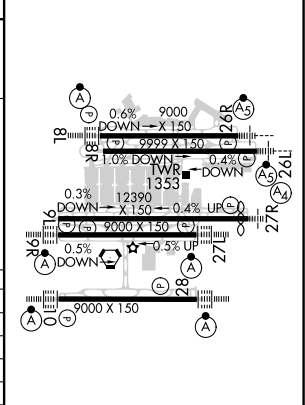


ELEV 1026	TDZE 1015
------------------	------------------



CATEGORY	A	B	C	D
S-ILS 8L	CAT II	RA 105/12	100 DA 1115	
S-ILS 8L		CAT IIIa	RVR 07	
S-ILS 8L		CAT IIIb	RVR 06	
S-ILS 8L		CAT IIIc	NA	

CATEGORY II & III ILS - SPECIAL AIRCREW & AIRCRAFT CERTIFICATION REQUIRED



HIRL all Rwy's
TDZ/CL Rwy's 8L, 9R, 10, 26R, 27L and 28

SE-4, 03 DEC 2020 to 31 DEC 2020

SE-4, 03 DEC 2020 to 31 DEC 2020