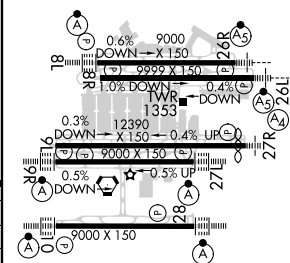


ILS RWY 9R (CAT II & III)
HARTSFIELD-JACKSON ATLANTA INTL (ATL)

MISSED APPROACH: Climb to 1500 then climbing left turn to 4000 on ATL VORTAC R-092 to CONNI INT/ATL 31 DME and hold.

RADAR REQUIRED



HIRL all Rwy's
TDZ/CL Rwy's 8L,
9R, 10, 26R, 27L and 28