

LOC I-AFA	APP CRS	Rwy Idg	27R	27L
111.3	275°	TDZE	11690	8865
		Apt Elev	985	999
			1026	1026

ILS or LOC RWY 27R
HARTSFIELD-JACKSON ATLANTA INTL (ATL)

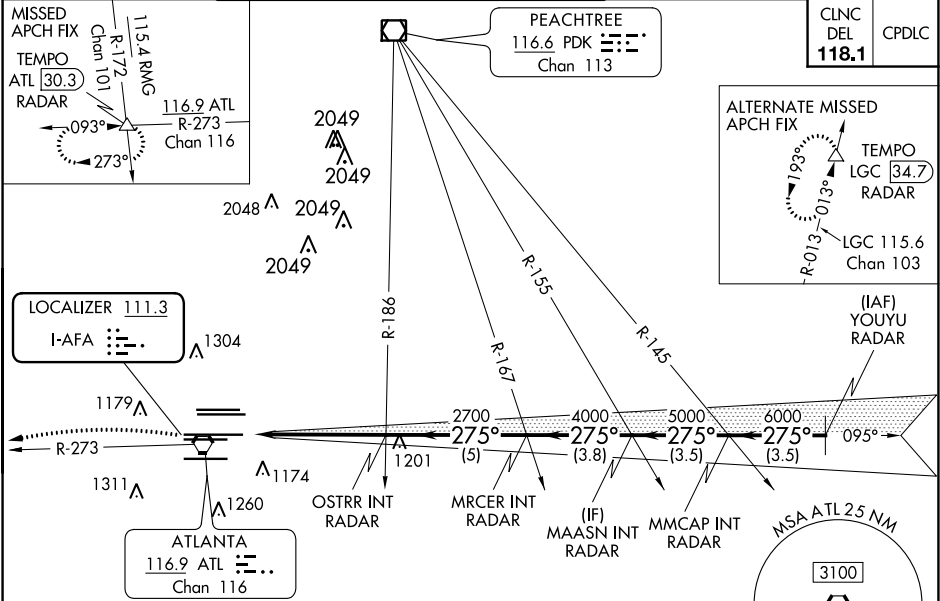
Simultaneous approach authorized with Rwy 26R or 26L or 28, or Rwy 26R and 28.
Inop table does not apply to sidestep 27L.
For inop MALS, increase S-LOC 27R Cat C and D to 1 $\frac{3}{4}$.

Rwy 27R MALS

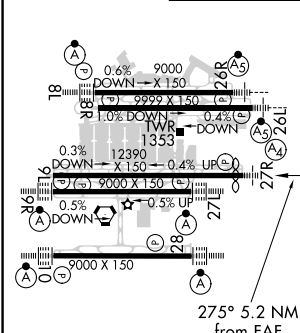
Rwy 27L ALSF-2

MISSED APPROACH: Climb to 1400 then climbing left turn to 4000 on ATL VORTAC R-273 to TEMPO INT/ATL 30.3 DME/RADAR and hold.

D-ATIS	ATLANTA APP CON	ATLANTA TOWER				ALL	GND CON				ALL
ARR 119.65		8L-26R	8R-26L	9L-27R	9R-27L	10-28 RWYS	(8L-26R, 8R-26L)	(9L-27R, 9R-27L)	10-28	RWYS	
DEP 125.55	127.9 379.9	119.1	125.325	123.85	119.3	119.5 254.4	121.9	121.75	121.65	254.4	



ELEV 1026	D	TDZE 27R 985
		TDZE 27L 999



HIRL all Rwy					
TDZ/CL Rwy 8L, 9R, 10, 26R, 27L and 28					
FAF to MAP 5.2 NM					
Knots	60	90	120	150	180
Min:Sec	5:12	3:28	2:36	2:05	1:44

RADAR REQUIRED

1400

4000

TEMPO

VGSI and ILS glidepath not coincident (VGSI Angle 3.00/TCH 72).

YOUYU

MMCAP INT RADAR

MAASN INT RADAR

MRCER INT RADAR

OSTRR INT RADAR

2700

4000

5000

6000

275°

7000

GS 3.00° TCH 56

CATEGORY	A	B	C	D
S-ILS 27R	1185/40 200 (200- $\frac{3}{4}$)			
S-LOC 27R	1420/40	435 (400- $\frac{3}{4}$)	1420/55	435 (400-1)
SIDESTEP 27L	1420/55	421 (400-1)	1420-1 $\frac{1}{2}$	421 (400-1 $\frac{1}{2}$)

SE-4, 03 DEC 2020 to 31 DEC 2020

SE-4, 03 DEC 2020 to 31 DEC 2020